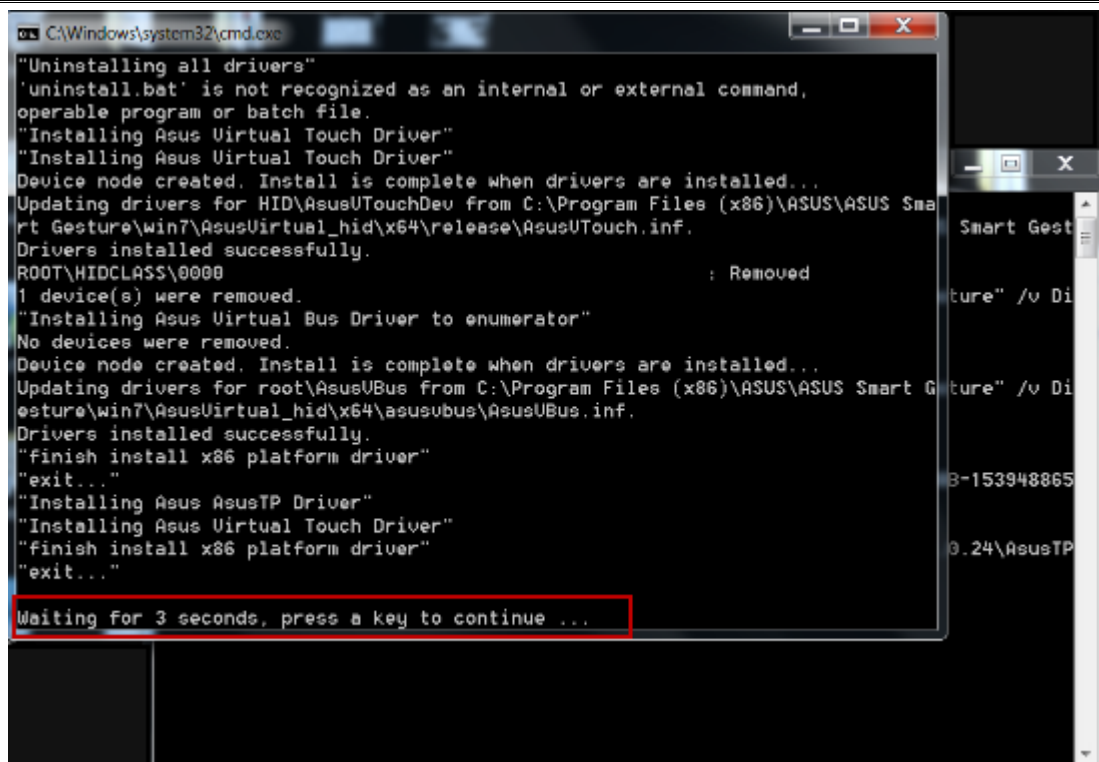
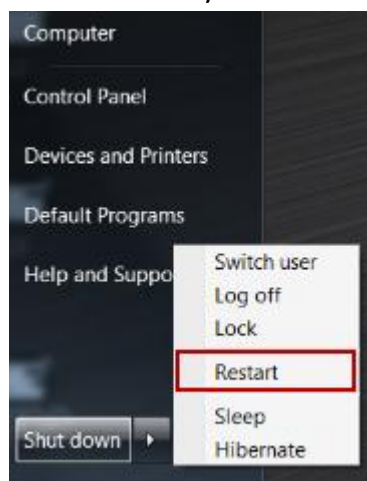


Title:	INSTALLATION MANUAL FOR UPDATE NEW ASUS SMART GESTURE		
Date:	2012/ 07/ 19	Version:	V.1.00
Goal:	To update touchpad driver to New ASUS Smart Gesture		
Steps:	<ul style="list-style-type: none"> ● If your Notebook is never installed with ASUS Smart Gesture, you can install ASUS Smart Gesture latest version directly. During the installation, vendor's driver and ASUS Virtual Touch will automatically be removed. 		
	<ol style="list-style-type: none"> 1. Right click on install.bat, click "Run as administrator" to install ASUS Smart Gesture. <div data-bbox="304 555 987 1164" data-label="Image"> <p>The image shows a Windows file explorer window with a list of files: 'install', 'SETUP', 'setup', 'SetupTPDrv', and 'uninstall'. A right-click context menu is open over the 'install' file. The menu options include 'Open', 'Edit', 'Print', 'Run as administrator' (which is highlighted with a red rectangle), 'Troubleshoot compatibility', 'Share with', 'Restore previous versions', 'Send to', 'Cut', 'Copy', 'Create shortcut', 'Delete', 'ASUS Secure Delete', 'Rename', and 'Properties'. The background shows a list of files with their names and timestamps.</p> </div> 2. There will be several Command Line Window running on the desktop during the installation, so please wait for minutes. Finally, there will be a 5 sec count down in the Command Line Window. After it, the installation is finished, and then all Command Line Window will close. 		



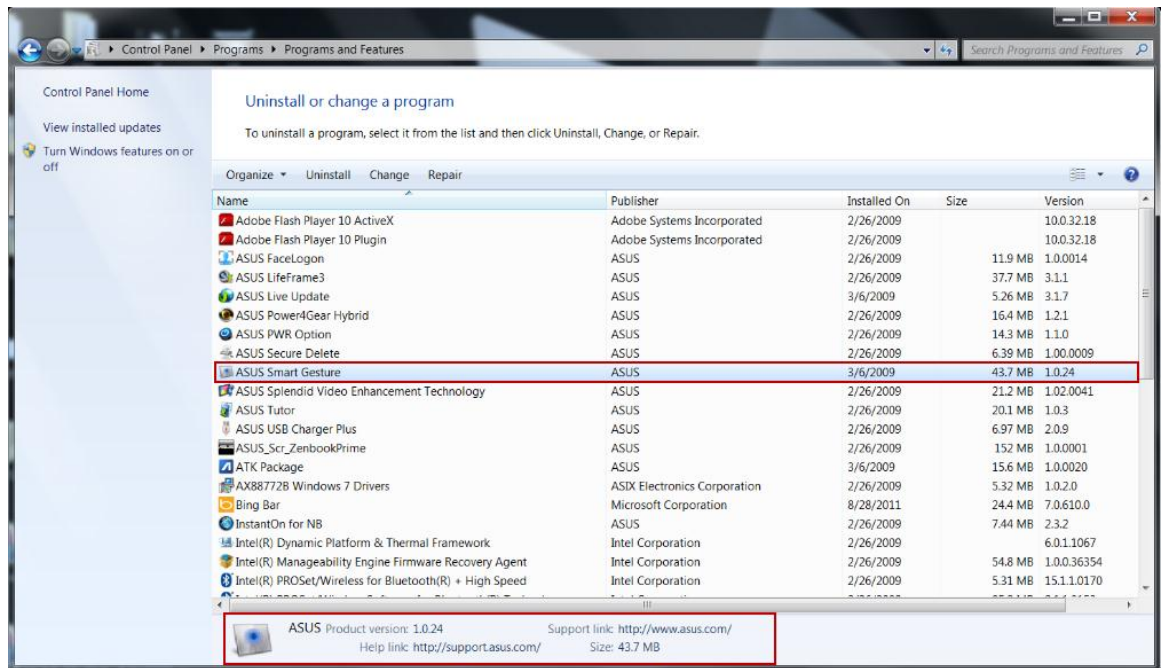
3. Please reboot system manually.



4. After system reboot, you can check ASUS Smart Gesture work by tray icon and check version information in program and features.

<< Start -> Control Panel -> Programs -> Programs and Features >>

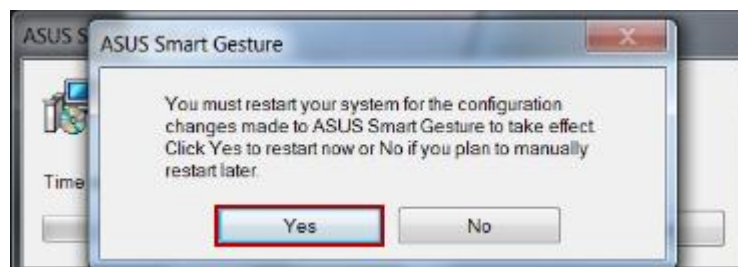
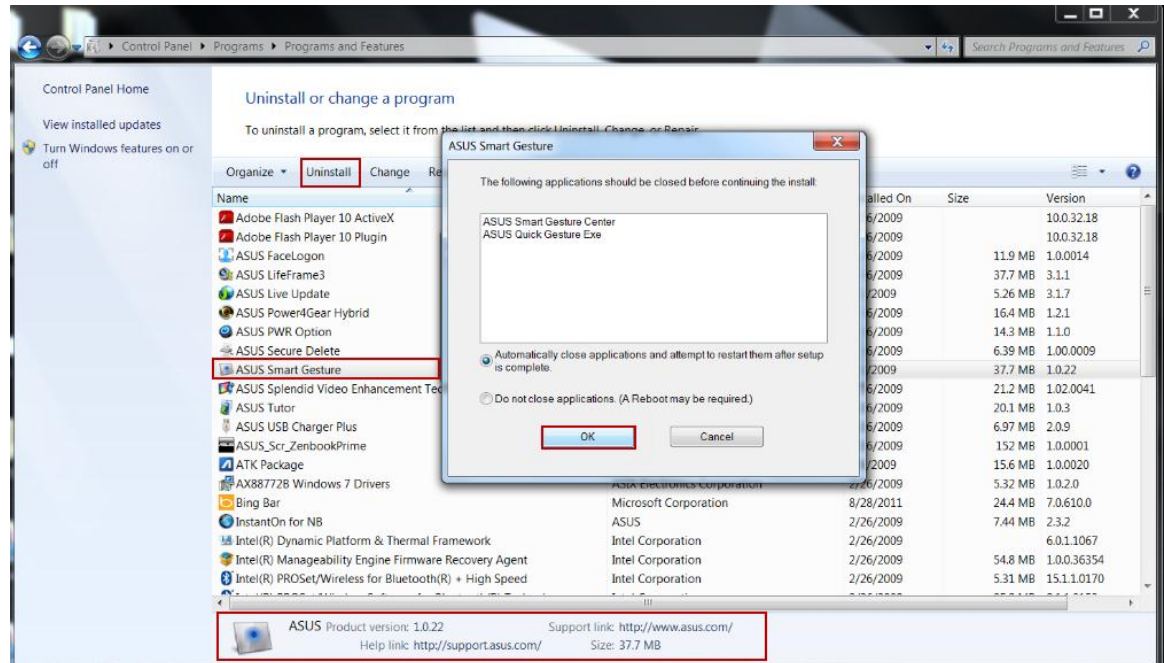




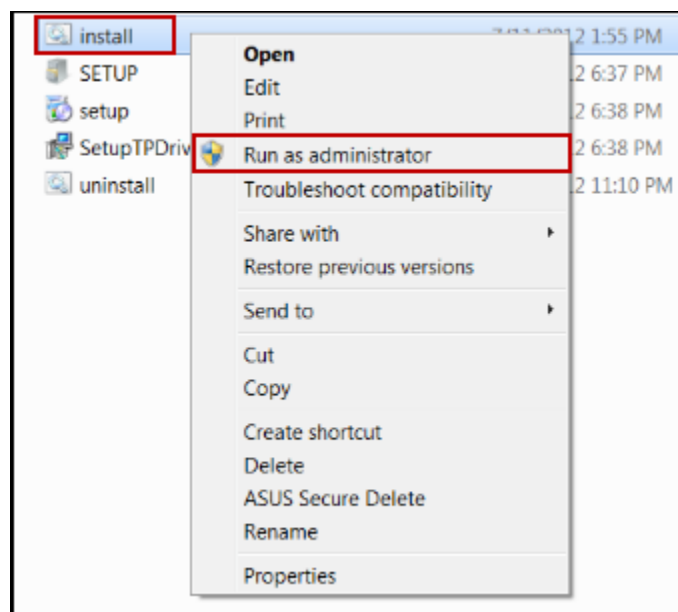
- If your Notebook is installed with older version of ASUS Smart Gesture, you have to remove older one, and then install new version.

1. Remove older version of ASUS Smart Gesture through Programs and Features, Click “OK” to allow the running applications closed to finish installation. After the process done, click “Yes” to allow system reboot.

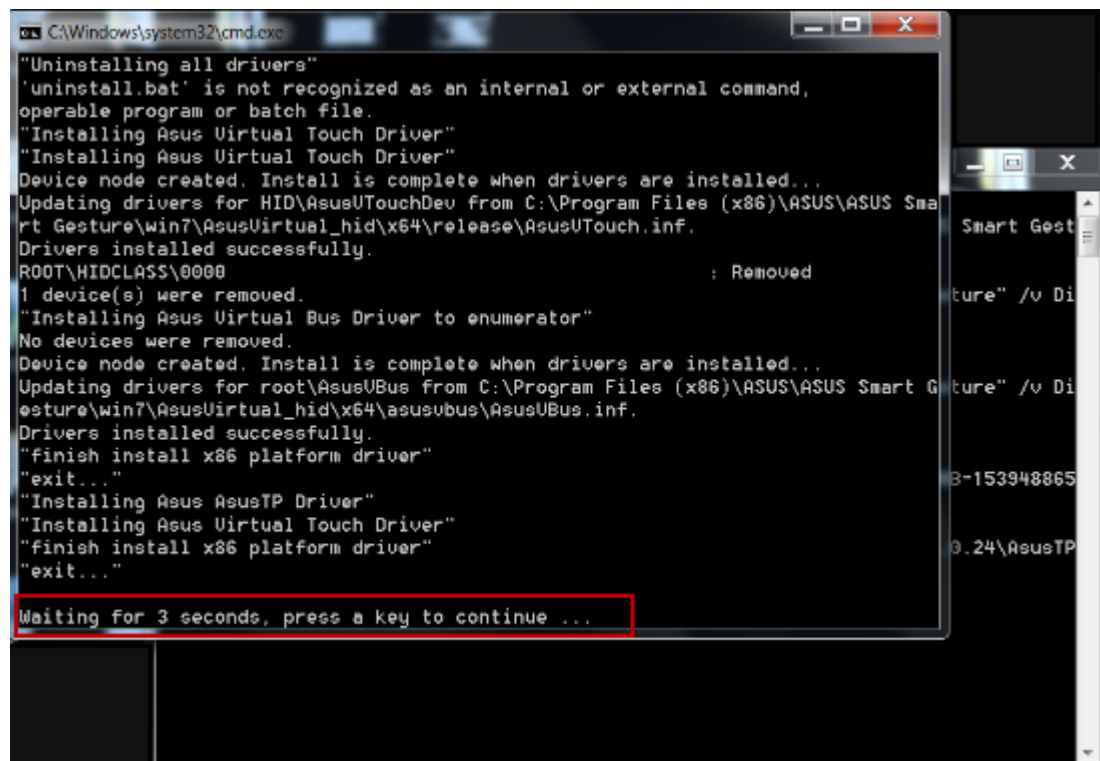
<< Start -> Control Panel -> Programs -> Programs and Features >>



2. Right click on install.bat, click “Run as administrator” to install ASUS Smart Gesture.



3. There will be several Command Line Window running on the desktop during the installation, so please wait for minutes. Finally, there will be a 5 sec count down in the Command Line Window. After it, the installation is finished, and then all Command Line Window will close..



4. Please reboot system manually.



5. After system reboot, you can check ASUS Smart Gesture work by tray icon and check version information in program and features.



