

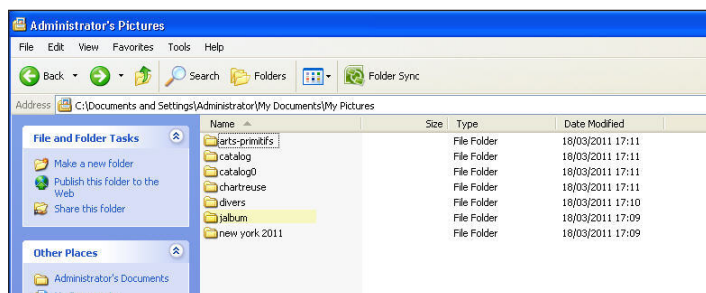
 Instant CatalogPublishing

User Guide

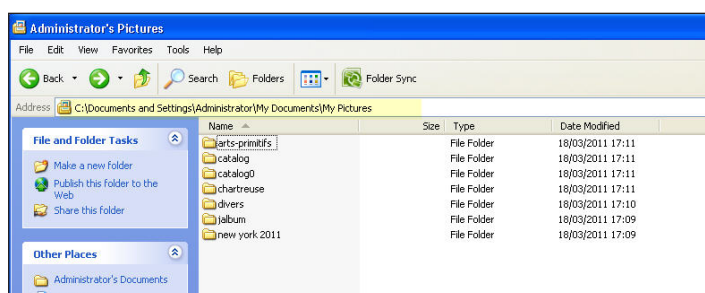
www.indesign-catalog.com

Installation

- Unzip the ICP.zip archive
- Copy the folder Instant Catalog Publishing in Program files
- Copy the layout folder (InDesign templates) in the location of your choice.
- Make a shortcut of Instant Catalog.exe and drag it on your desktop
- Copy the folder «jalbum» in the folder containing your pictures.
- cf page 9 for scripts installation

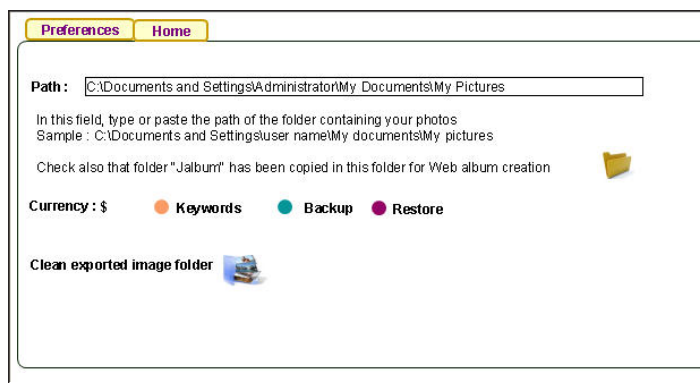


- Copy the full path of the folder containing your pictures from the address bar (You will paste it in step «first launching»)



First launching

- Double click on Instant Catalog.exe
- Enter your serial number
- Paste the path of folder in the field “path”



- Click on “Home” to come to main menu

ICP concept

This software is based on very simple and efficient concepts

- You can import as many images folders as you want in the database.
- It gives you the ability to sort these images according different keywords
- You can export your pictures with comments for Instant Catalog Publishing with Jalbum or InDesign.
- All the images imported are linked to their original folder. Removing images or folders will break the link
- Deleting records in database will not affect the images in original folder

Albums import


- Click on “Import an album”

Home

Folder name :


Date :

OK





Open your pictures folder


- Type the name of the folder you want to import
- Click on the album folder icon  to display the content of your picture folder.
- Select the date you want to associate to this album.
- Click on ok



[Import an album](#) [Delete an album](#) [Import Excel file](#) [Export](#) [Preferences](#) [View layouts](#) 


Albums :

Keywords :

Album N° 13 12 photos in your album June 2011  



Arts-primitifs  **Info**


1  


01.jpg

Price :
Category :


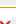
Keywords :
☐ Big_forest
☐ New-york
☐ Very Big Seas


2  


02.jpg

Price :
Category :



Keywords :
☐ Big_forest
☐ New-york
☐ Very Big Seas

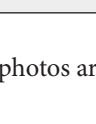
3  


03.jpg

Price :
Category :

Keywords :
☐ Big_forest
☐ New-york
☐ Very Big Seas

4  


04.jpg

Price :
Category :

Keywords :
☐ Big_forest
☐ New-york
☐ Very Big Seas

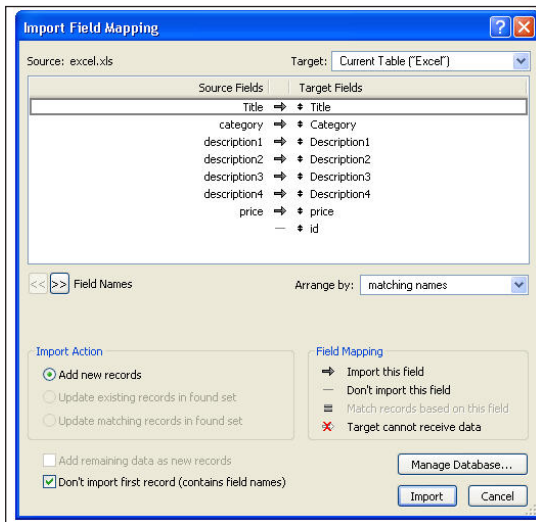
- the photos are imported and ready to be commented

Import Excel file

You can also directly import an excel file.

You will find a file called excel.xls in the ICP folder, this file matches the import order and you can copy/paste your data in this file.

- Click on “Import excel file” and click on “select Excel file”
- You can import 7 fields corresponding to Title, category, description1, description2, description3, description4, price



- If fields are not matching, you can drag them with double arrow vertical icon in order to align excel fields with FileMaker fields



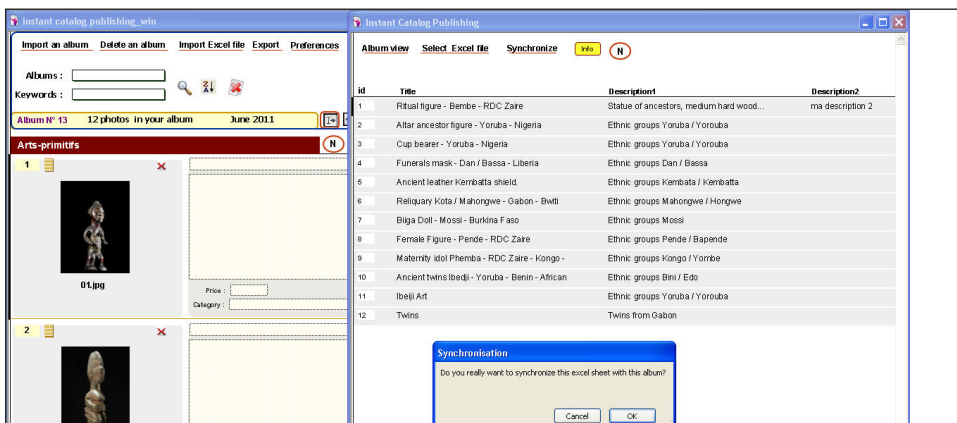
- Click on “don’t import first record “contain field names) to skip first Excel title row



- Your excel file is now imported

Album view Select Excel file Synchronize Info N			
id	Title	Description1	Description2
1	Cup bearer - Yoruba - Nigeria	Ethnic groups Yoruba / Yorouba	
2	Funerals mask - Dan / Bassa - Liberia	Ethnic groups Dan / Bassa	
3	Ancient leather Kembatta shield	Ethnic groups Kembata / Kembatta	
4	Reliquary Kota / Mahongwe - Gabon - Bwiti	Ethnic groups Mahongwe / Hongwe	
5	Biaga Doll - Mossi - Burkina Faso	Ethnic groups Mossi	
6	Female Figure - Pende - RDC Zaire	Ethnic groups Pende / Bapende	
7	Maternity idol Phemba - RDC Zaire - Kongo -	Ethnic groups Kongo / Yombe	
8	Ancient twins Ibedji - Yoruba - Benin - African	Ethnic groups Bini / Edo	
9	Ibeji Art	Ethnic groups Yoruba / Yorouba	
10	Twins	Twins from Gabon	
11	Ritual figure - Bembe - RDC Zaire	Statue of ancestors, medium hard wood...	
12	Altar ancestor figure - Yoruba - Nigeria	Ethnic groups Yoruba / Yorouba	

- You can arrange line order by typing new number in ID column. It is also possible to give a sequential order by clicking on N
- Click on “Synchronize” and click on ok in order to fill automatically the fields of selected album



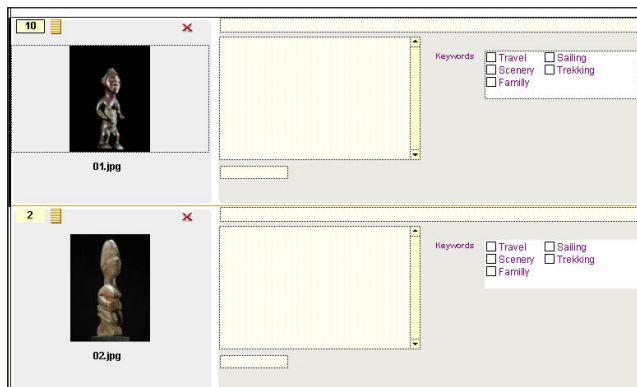
Deleting comments

- You can delete all comments of selected album by clicking on the corresponding icon



Reordering

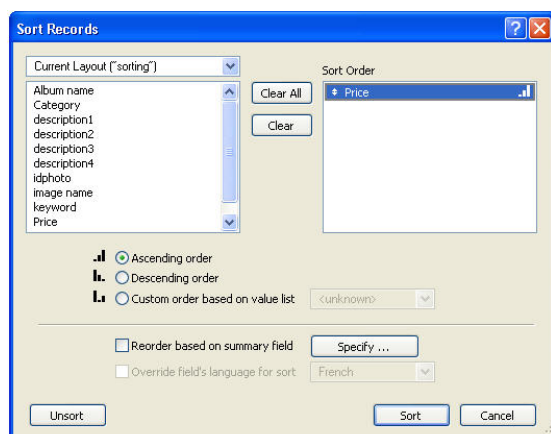
- You can reorder the photos by entering a new number in the corresponding field and pressing enter.



- If you change numbering, you can apply again sequential order by clicking on “N” button

Sorting

- You can sort any album or keyword selection by clicking on the sort icon



- Select the field you want to sort, choose the sorting order and click on ok.

Album selection

- To view the different albums you have imported, you can use corresponding pop-up menu.



This application supports complex script like Arabic or Hebrew, you can display RTL layout by clicking on this icon.



Advanced search

- in List view, click on search icon



Advanced search

Title :

Category :

Description 1 :

Description 2 :

Description 3 :

Description 4 :

Album name :

Image name :

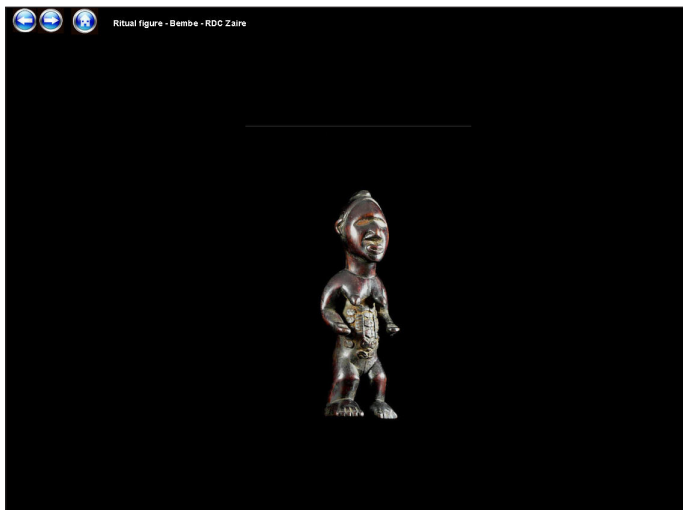
Keywords :

☐ big_forest
☐ new-york
☐ very big seas


- type your search criteria and press enter key to perform search

Zoom view

- You can get a zoom view by clicking on a photo



Add comments

- You can add comments to any photos : title, description, and price if necessary
- By clicking on the  icon, you can display larger view to type more information


Album N° 1

Date : March 2011

Ritual figure - Bembe - RDC Zaire

Description

Additional description ☐



...Statue of ancestors, medium hard wood

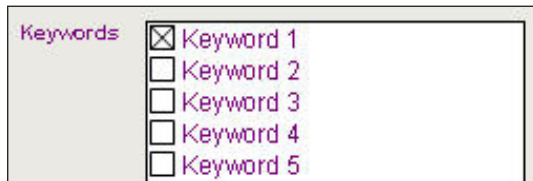
the opening on the back was used by the „nganga” to give vital force to the figure, afterwards it was filled with magical material „bilongo” (medicine) or relics of an ancestor (hair, pieces of finger nails or bones) as a symbol of the power and spirit of the deceased relative. Afterwards the opening was closed by a piece of fabric or a plug. As long as the spirit stayed within the statue, it watched over his descendants and punished contempts against customs and rules

Belonging to the so-called „cryptopower figures”, a terminology introduced by William Fagg

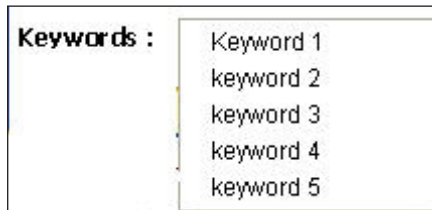
- You can also use additional description fields (For InDesign only) which will be included in datamerge. Mark corresponding check box to use this feature.

Keywords

- You can assign one or several keywords to any photos



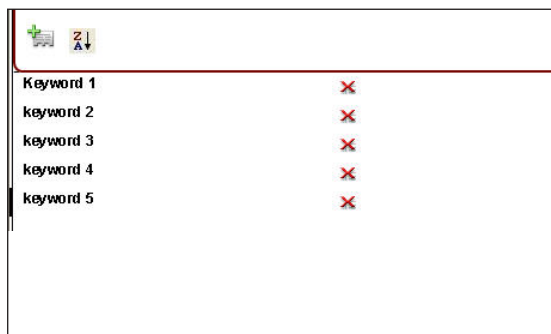
- To search all the photos corresponding to one keyword, you can use the corresponding pop-up



- To define new keywords, you have to go in Preferences panel and click on keyword button



- you can add , delete new keywords or modify existing one



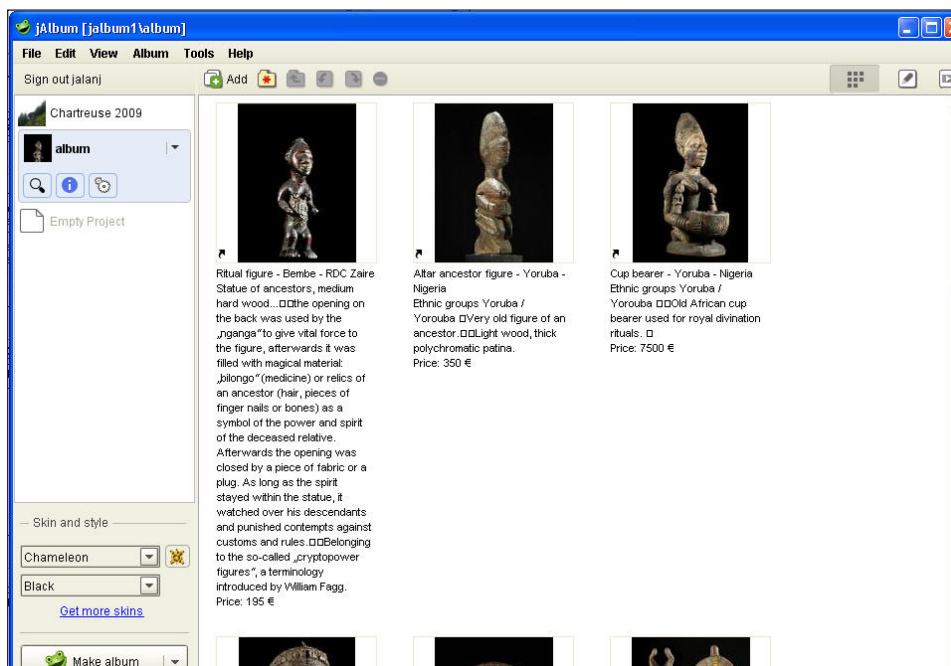
Export

The export function is very powerfull and enable to make a bridge with other applications like Jalbum, InDesign.

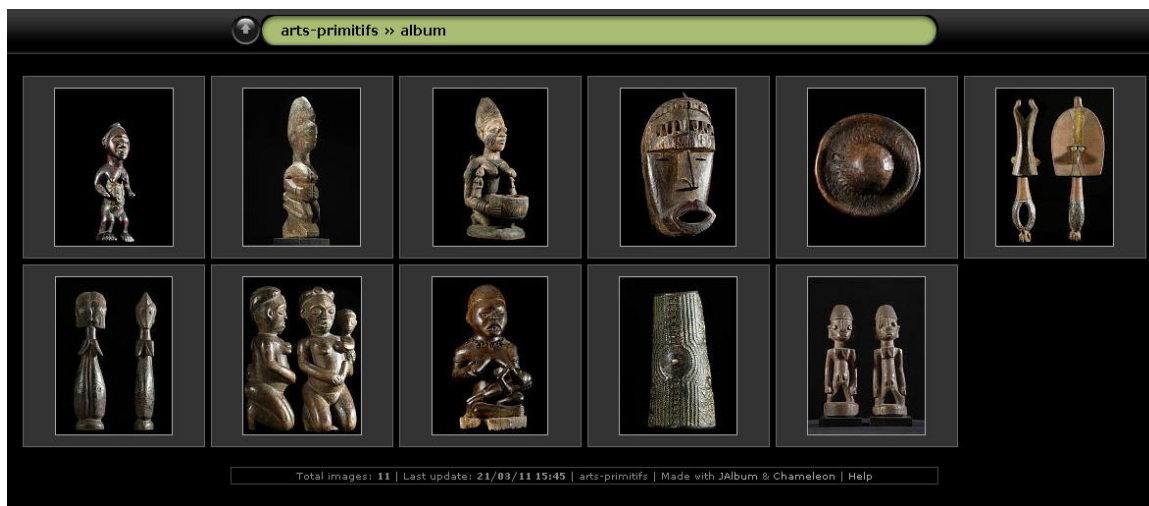
- Just click on the export button and it will open a folder containing the exported files (jalbum-settings.jap, albumfiles_id.txt)

Jalbum

- Install Jalbum available at jalbum.net
- Just click on [jalbum-settings.jsp](#) to open you jalbum ready to be published



- Click on «Make Album» to create your Web album in a few seconds



InDesign, Flash and PDF files creation via datamerge

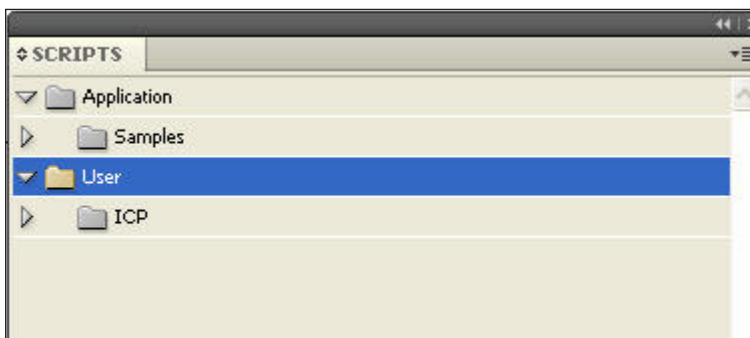
ICP includes a set of layout and scripts to publish instantaneously InDesign, Flash or PDF catalogs.

Layout

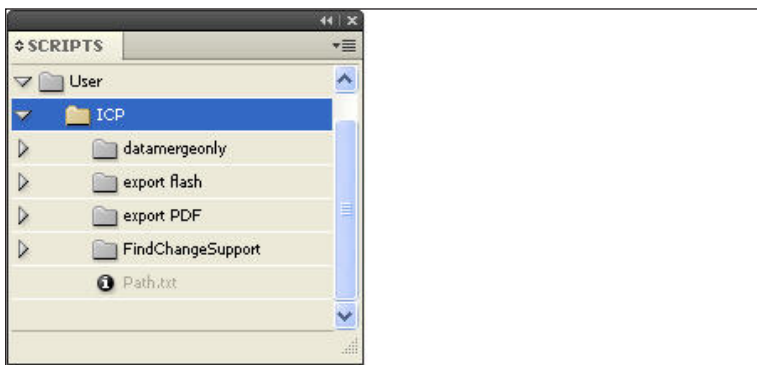
Copy the folder «Layouts» in the folder of your choice. This folder includes layouts single or multiple records layout. The folder «RTL layout» includes files for right to left scripts like Arabic or Hebrew.

Script installation

- Launch InDesign CS4 or CS5
- Open the script panel with Windows>utilities>script
- Right click on the «user» folder until «Reveal in explorer» is displayed
- Select «Reveal in explorer» until the folder Script panel is displayed
- Drag the ICP scripts folder into this folder and they will appear in the script panel in user folder
- Open the path.txt file to define in which folder Flash or PDF files will be exported for example :
C:\Documents and Settings\Administrator\My Documents\output



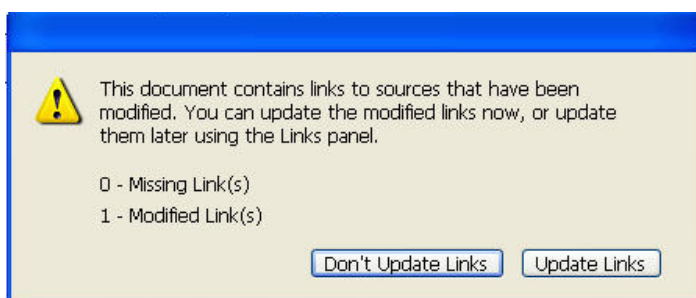
- It can be expanded to display the scripts



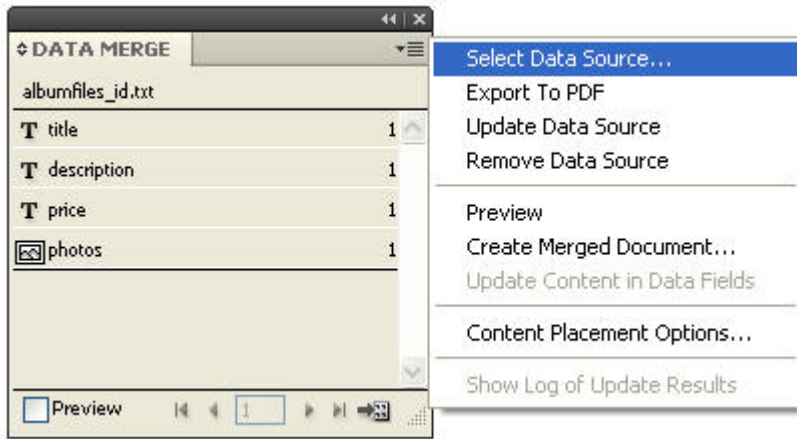
- You can also directly instal the scripts in folder
C:\Program Files\Adobe\Adobe InDesign CS5\Scripts\Scripts Panel

Creation of a Flash or PDF catalog

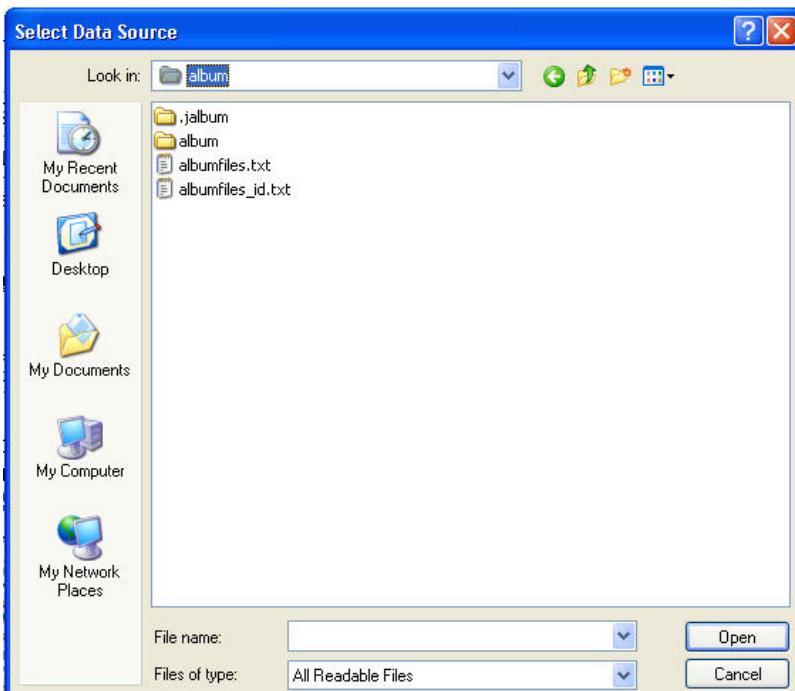
- Open one of the template in the layout folder. It includes several InDesign templates with single (SR) or multiple records layout (MR)
- A warning message is displayed



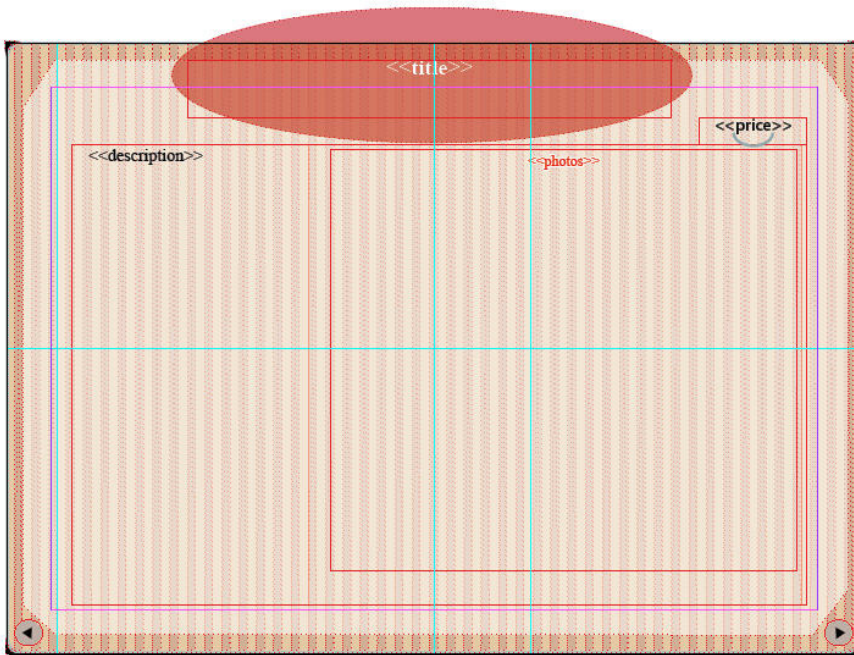
- Click on «don't update links»
- Display datamerge palette : Window>utilities>datamerge
- Select the command «Select data source» in contextual menu



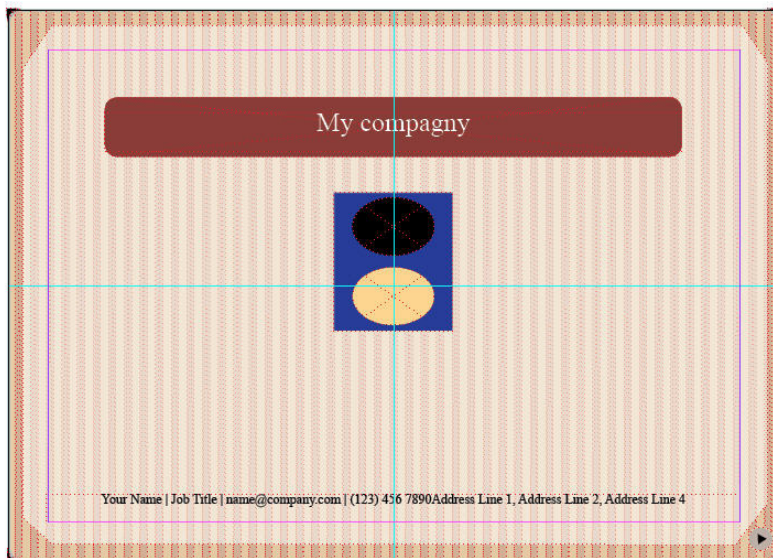
- Open the Jalbum folder in your pictures folder (path defined page 1)
- Then open the folder \album1\album in order to display different files including albumfiles_id.txt



- Select albumfiles_id.txt (it is the file exported by Instant Catalog database)



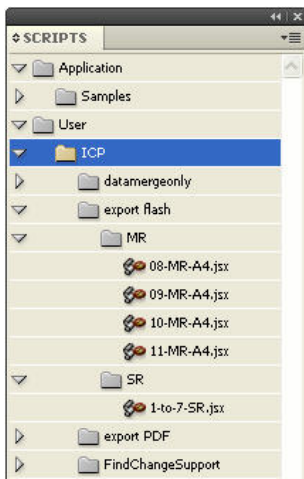
- You can also modify the master page
- Display the page palette and double click on 1-master



- You can add personal information, logo, picture, etc on this page.
- Save your document and it is ready now to be merged

Catalog generation

- To generate the InDesign, Flash or PDF file, open the script palette, and double click on corresponding script



For single layout templates (SR), use 1-7-SR.jsx script
For multiple layout templates (MR), use script corresponding to layout names , for example, 08-MR-A4.jsx for 8-MR-A4.indd

- After a while, the InDesign, PDF or Flash file is generated in your output folder defined in page 9

Single records layout




Art primitif Africain
Antiquités, Arts premiers et primitifs d'Afrique
Objets rares et à collectionner
Strasbourg - Paris
France

Ritual figure - Bembe - RDC Zaire

195 \$

Statue of ancestors, medium hard wood...the opening on the back was used by the „nganga” to give vital force to the figure, afterwards it was filled with magical material: „bilongo” (medicine) or relics of an ancestor (hair, pieces of finger nails or bones) as a symbol of the power and spirit of the deceased relative. Afterwards the opening was closed by a piece of fabric or a plug. As long as the spirit stayed within the statue, it watched over his descendants and punished contempis against customs and rules. Belonging to the so-called „cryptopower figures”, a terminology introduced by William Fagg.



Multiple records layout



Art primitif Africain
Antiquités, Arts premiers et primitifs d'Afrique
Objets rares et à collectionner
Strasbourg - Paris
France



Ritual figure - Bembe - RDC Zaire

Statue of ancestors, medium hard wood...the opening on the back was used by the „nganga” to give vital force to the figure, afterwards it was filled with magical material: „bilongo” (medicine) or relics of an ancestor (hair, pieces of finger nails or bones) as a symbol of the power and spirit of the deceased relative. Afterwards the opening was closed by a piece of fabric or a plug. As long as the spirit stayed within the statue, it watched over his descendants and punished contempis against customs and rules. Belonging to the so-called „cryptopower figures”, a terminology introduced by William Fagg.

Altar ancestor figure - Yoruba - Nigeria

Born in Yoruba, Nigeria. This is a figure of an ancestor (spirit) which is used for religious purposes.

Cup bearer - Yoruba - Nigeria

Born in Yoruba, Nigeria. This is a figure of an ancestor (spirit) which is used for religious purposes.

Funerals mask - Dan / Bassa - Liberia

Born in Dan / Bassa, Liberia. This is a mask used for religious purposes.

Ancient leather Kembatta shield.

Born in Kembatta, Liberia. This is a shield used for religious purposes.

