

How to Print on Labels.

©2010 Copyright by Lars Sams

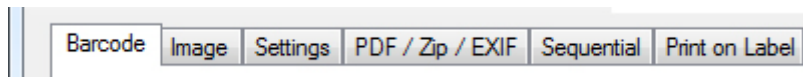
Some sample files have been included in the setup file and they are located at Documents\Retail Barcode Maker Pro\

The Help file is at Start > All Programs > Shareware by Lars Sams > Retail Barcode Maker Pro

Let's get started.

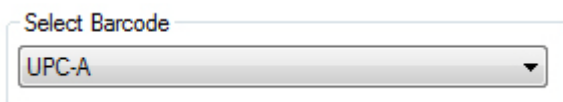
Run Retail Barcode Maker Pro

Make sure you have selected the Barcode TAB. (Please look at the Picture below)

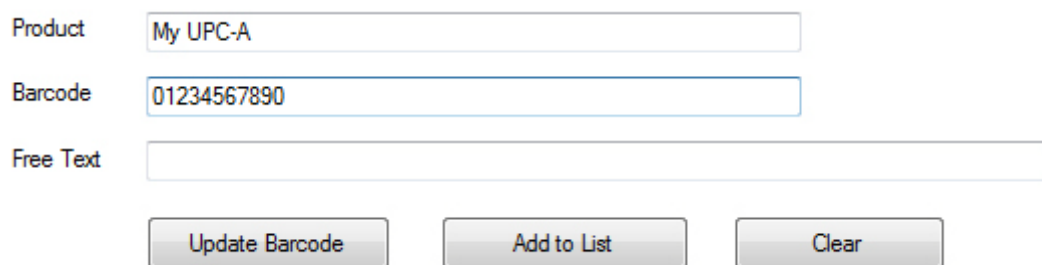


Add a UPC-A

Select the UPC-A barcode in the Select Barcode area. (Please look at the Picture below)

A screenshot of a dropdown menu labeled 'Select Barcode'. The menu is open, showing a list of options. 'UPC-A' is selected and highlighted in blue. A small downward arrow is visible on the right side of the dropdown box.

Fill in the information for the barcode. The UPC-A needs 11 digits, the last digit (12th digit) is the checksum and will be added automatically. All but the Barcode is optional. (Please look at the picture below)

A screenshot of the input fields for adding a barcode. There are three text boxes: 'Product' containing 'My UPC-A', 'Barcode' containing '01234567890', and 'Free Text' which is empty. Below these fields are three buttons: 'Update Barcode', 'Add to List', and 'Clear'.

The Barcode is shown in the Barcode Area. (Please look at the Picture below)



Rec.Size 100% ▾ Height: 100% ▾

Add to List

[illegible]

Select Barcode
EAN-13 ▼

Product	<input type="text" value="My EAN-13"/>
Barcode	<input type="text" value="491234567890"/>
Free Text	<input type="text"/>
<div><input type="button" value="Update Barcode"/> <input type="button" value="Add to List"/> <input type="button" value="Clear"/></div>	

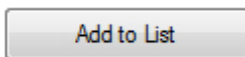
The Barcode is shown in the Barcode Area. (Please look at the Picture below)



Retail Barcode Maker Pro has predefined GS1 recommended size for the barcode and you can quickly change the size by using the Rec.Size and Height in the Tool Bar (icon bar). We use the default, Rec.Size 100% and Height 100%. (Please look at the Picture below)

Rec.Size 100% ▾ Height: 100% ▾

Click on the Add to List button. (Please look at the Picture below)



The EAN-13 barcode have been added to the Barcode List (Please look at the Picture below)

[illegible]

Select the barcodes and Label

Now we will select both the UPC-A and the EAN-13, right click in the Barcode List and click on Check all Items. (Please look at the Picture below)

Label Measurements

Label Width: 63,5 mm

Label Height: 38,1 mm

Horizontal Pitch: 66 mm

Vertical Pitch: 38,1 mm

Adjust Barcode Placement

Left/Right: 0 mm

Up/Down: 0 mm

Preview / Print

☒ Labels to Print of each item: 5

☐ Page(s) to print of each item: 2

☒ Outline Labels

☒ Check to see if Barcode fits label.

Preview Print

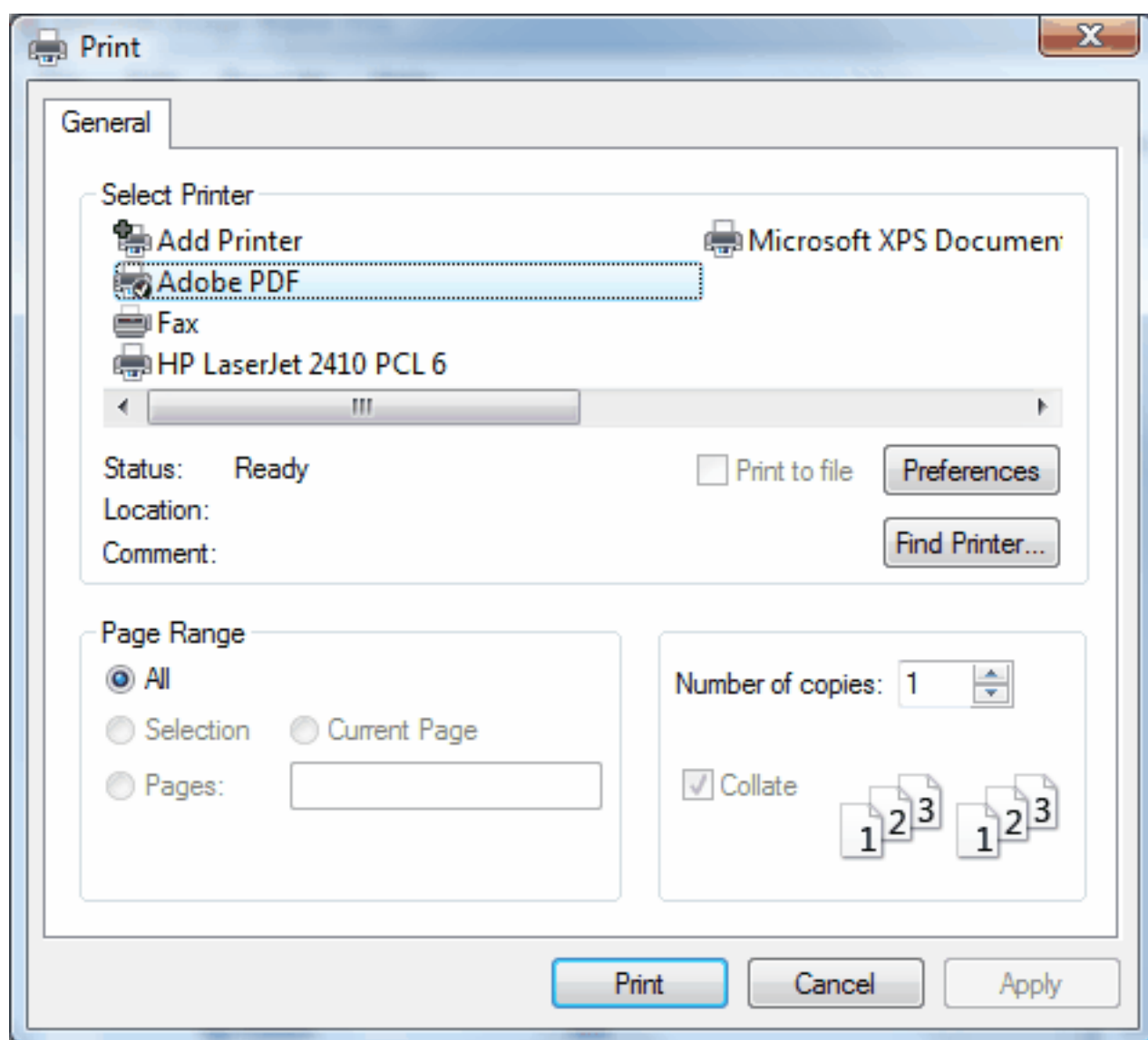


Use the Preview icon in the tool bar or click on the Review button to preview the barcodes on the labels.

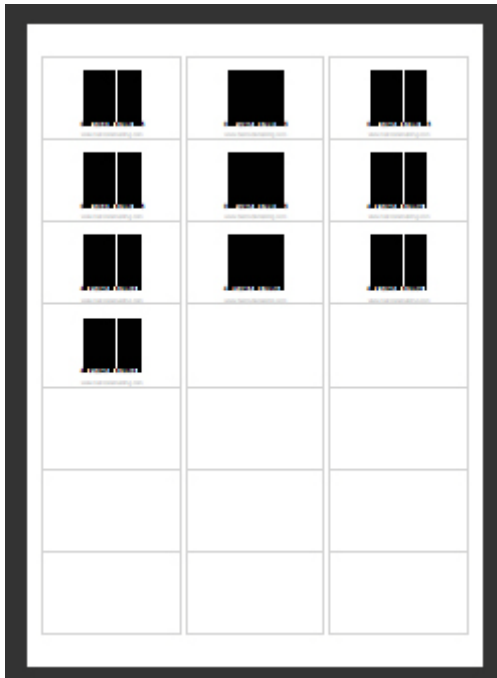


Use the Print icon in the tool bar or click on the Print button. I will click on the Print icon

The Print dialog window will show. Select the printer you would like to use by clicking on it, when ready click on the Print button. In this case I use Adobe PDF. (Please look at the Picture below)



This is how the label sheet looks at 25% magnification in Adobe. (Please look at the Picture below)



This is how one label looks. (Please look at the Picture below)



Contact

Now you know how to print barcodes on labels. If you have any questions, please e-mail info@barcodemaking.com

The homepage is at www.barcodemaking.com

Get Retail Barcode Maker Pro.

Retail Barcode Maker Pro is only USD \$48 (as low as USD \$38, depending on the number of copies ordered.)



Retail Barcode Maker Pro., **Product ID: 300377132** (Product ID: is valid for ShareIt! only).

Order Page:

<https://secure.shareit.com/shareit/checkout.html?productid=300377132&language=English>



Barcode Maker., **Product ID: 32763-12** (Product ID: is valid for regNow only)

Order Page: http://www.regnow.com/softsell/nph-softsell.cgi?ss_short_order=true&items=32763-12