

# Shop Attendant-Lite :

## Setup and Configuration guide.

---

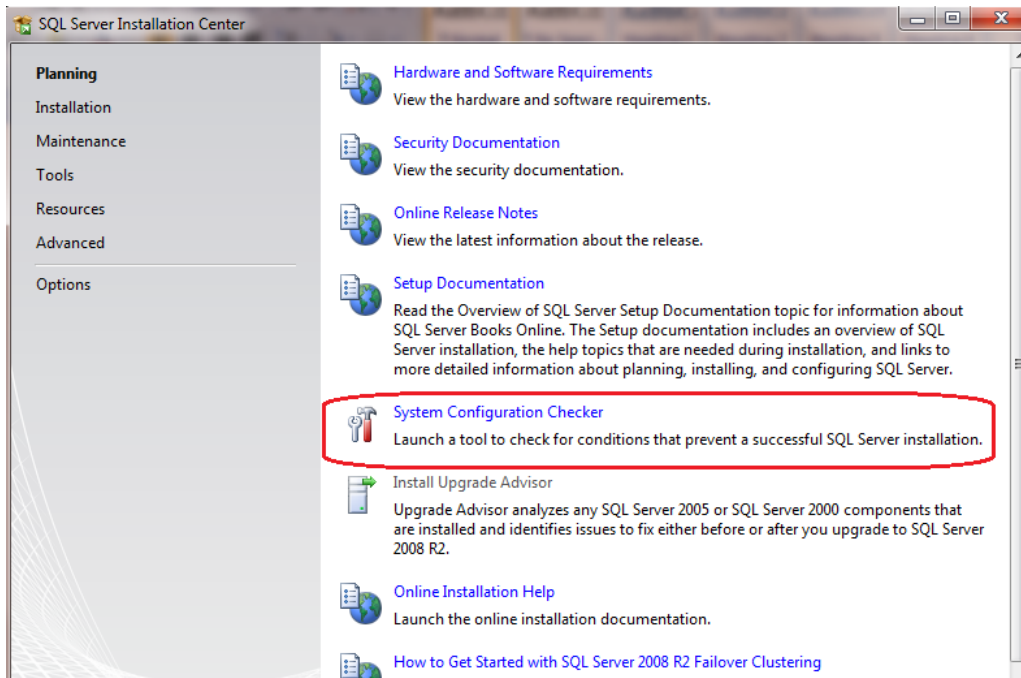
### **1. Setup and Configuration**

Prior to installing Shop Attendant-Lite you need to install Microsoft SQL Server 2008 or later. Shop Attendant-Lite uses SQL Server as its data repository.

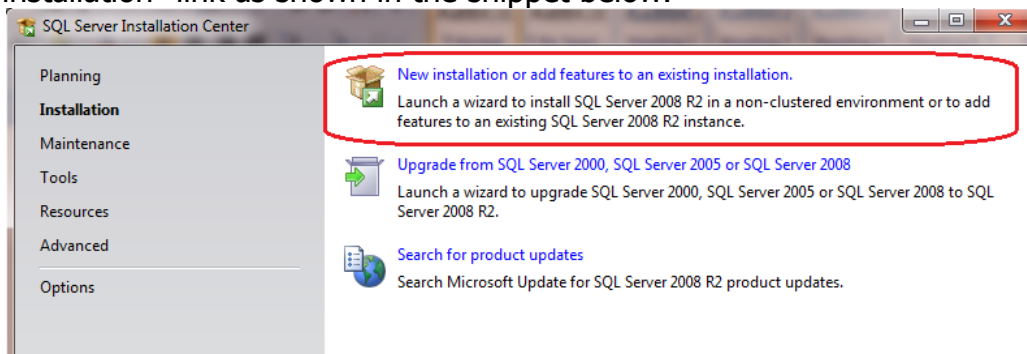
The express edition of SQL Server 2008 can be downloaded from Microsoft website and is free for use.

#### **2.1 Installing SQL Server 2008 Express Edition**

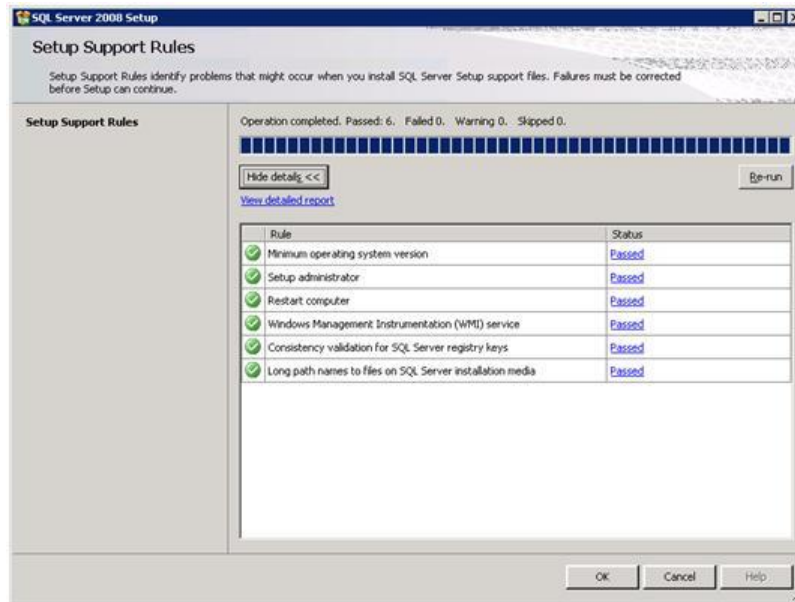
1. Download from Microsoft's site (<http://www.microsoft.com/express/Database/>) , the SQL Server 2008 Express R2 installer with database and management tools.
2. Designate one of the machines on your network to host the database server or if you already have a windows server running on a machine, login with administrative privileges and then double click on the downloaded file to launch the installation process. If SQL Server 2008 prerequisites are not meet then the installation wizard will prompt to install the prerequisites. Once the prerequisites are installed and the server is restarted, rerun the setup program to resume the installation.
3. On the SQL Server Installation Center window select Planning on the left hand pane and then click run "System Configuration Checker" on the right hand pane to look for any potential issues that can prevent the successful installation of SQL Server 2008. If any issues are discovered then they must be fixed before continuing with the wizard.



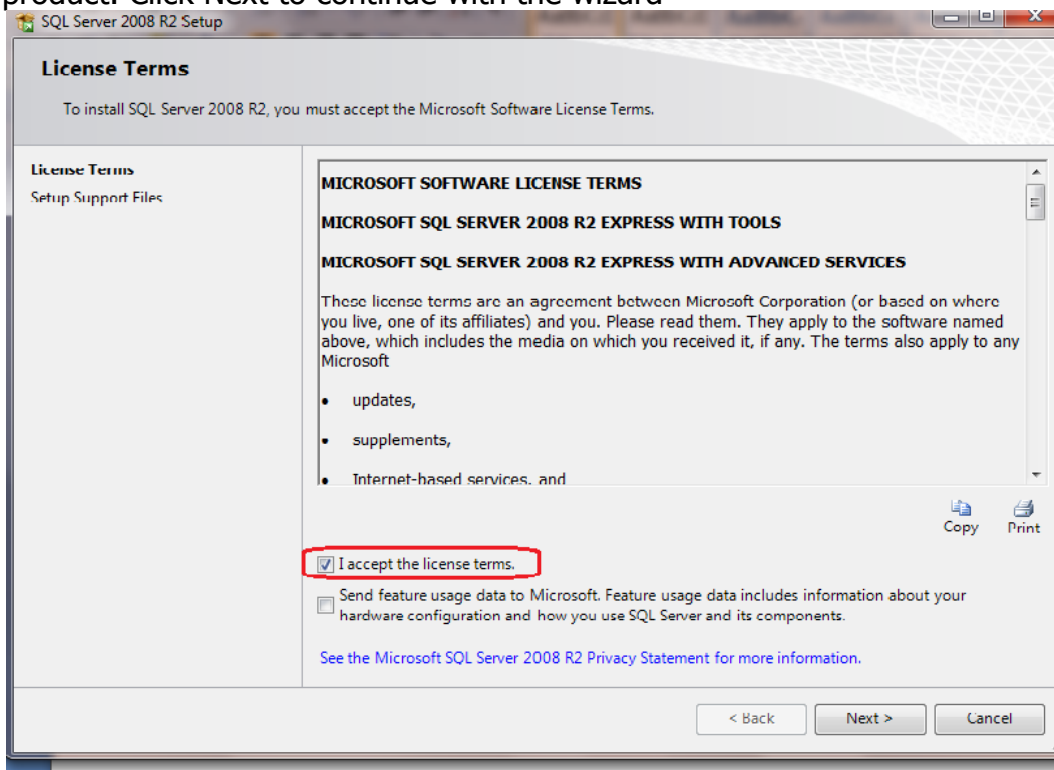
4. Click on SQL Server Installation Center's Installation screen. To create a new installation of SQL Server 2008 click on "New installation or add features to an existing installation" link as shown in the snippet below.



5. This will run the Setup Support Rules to identify problems that might occur when installing SQL Server Setup support files. If there are any issues discovered then it must be fixed before continuing with the wizard. If there are no issues discovered then click OK to continue with the installation.

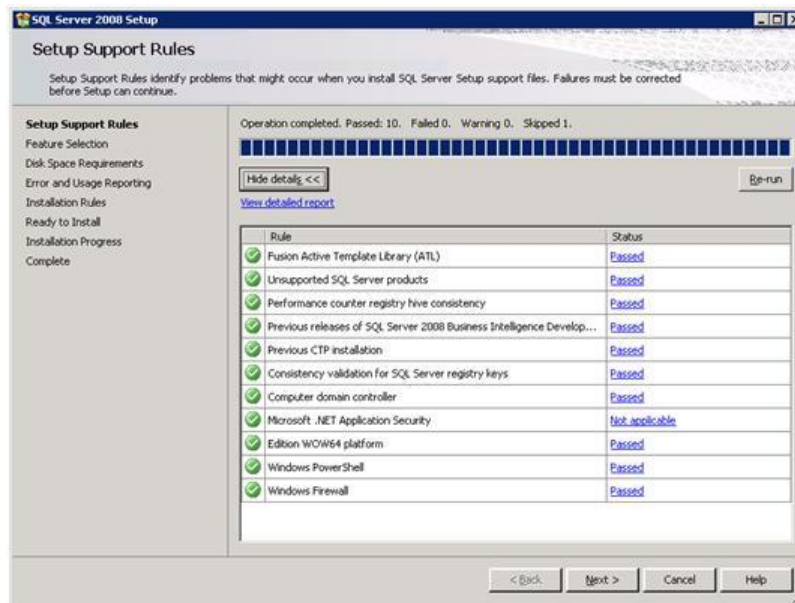


6. The License Terms screen appears. Read the license agreement and then select the check box at the bottom of the page to accept the licensing terms and conditions of the product. Click Next to continue with the wizard

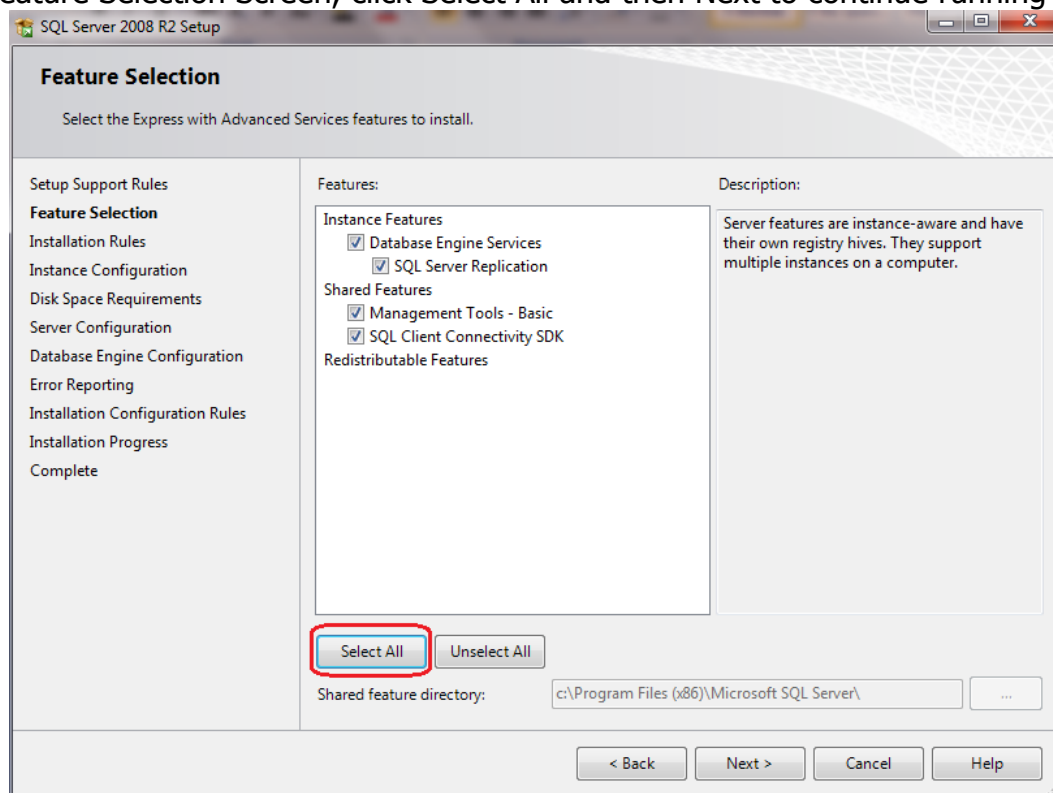


7. In the Setup Support Files screen it will identify problems that can occur when you

are installing SQL Server Support files. If there are any issues discovered then they must be fixed before continuing with the wizard. Click Next to continue with the wizard.

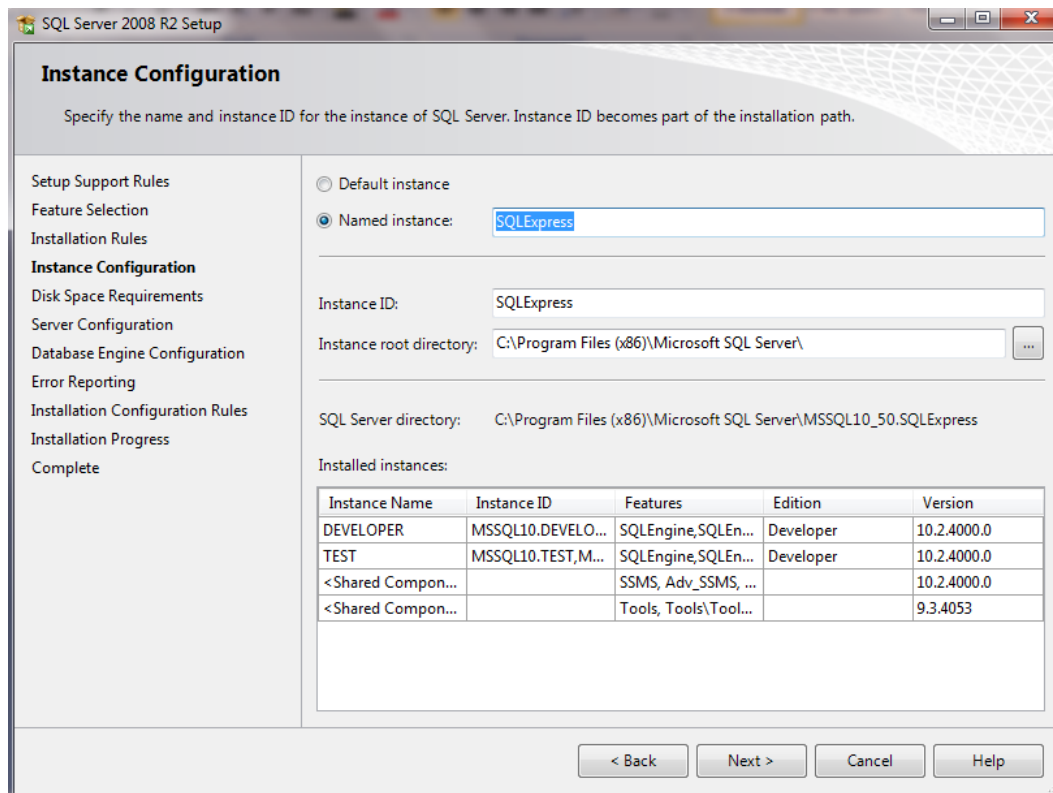


8. On the Feature Selection Screen, click Select All and then Next to continue running



the wizard.

9. On the Instance Configuration screen, select Named Instance and type **SQLExpress** if not already provided as shown below. Then click Next to continue



SQL Server 2008 R2 Setup

### Instance Configuration

Specify the name and instance ID for the instance of SQL Server. Instance ID becomes part of the installation path.

Setup Support Rules  
Feature Selection  
Installation Rules  
**Instance Configuration**  
Disk Space Requirements  
Server Configuration  
Database Engine Configuration  
Error Reporting  
Installation Configuration Rules  
Installation Progress  
Complete

☐ Default instance  
☒ Named instance:

Instance ID:

Instance root directory:  ...

SQL Server directory:

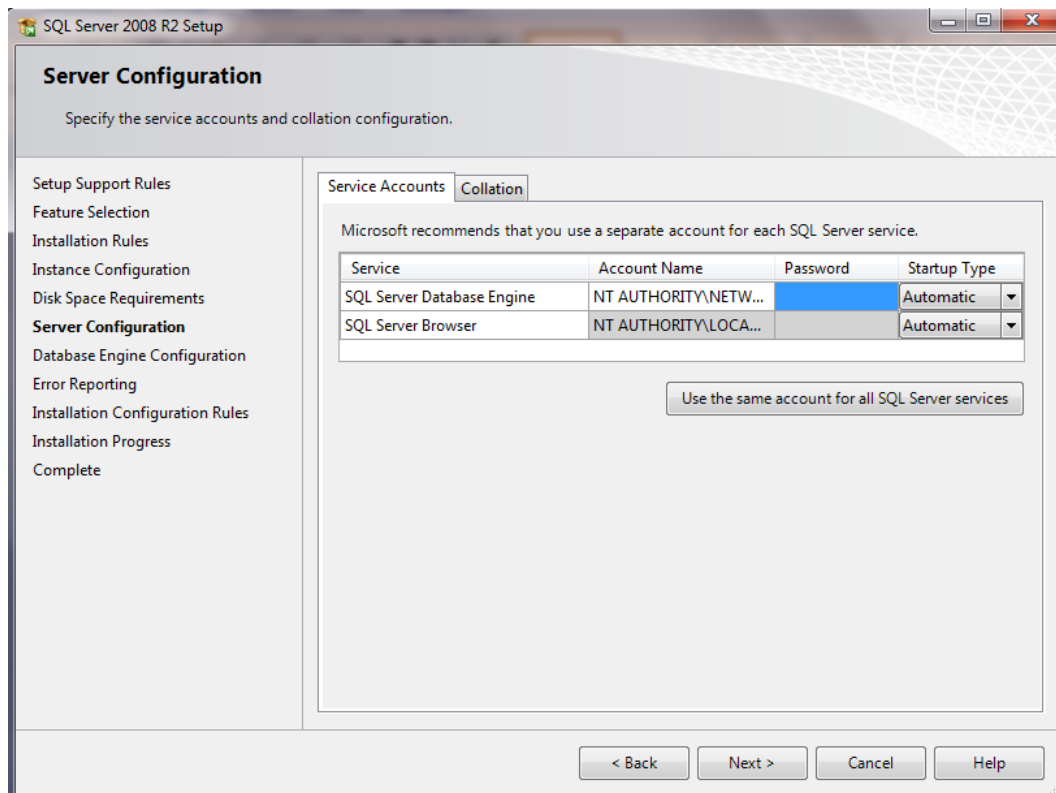
Installed instances:

| Instance Name     | Instance ID       | Features             | Edition   | Version     |
|-------------------|-------------------|----------------------|-----------|-------------|
| DEVELOPER         | MSSQL10.DEVELO... | SQLEngine,SQLEn...   | Developer | 10.2.4000.0 |
| TEST              | MSSQL10.TEST,M... | SQLEngine,SQLEn...   | Developer | 10.2.4000.0 |
| <Shared Compon... |                   | SSMS, Adv_SSMS, ...  |           | 10.2.4000.0 |
| <Shared Compon... |                   | Tools, Tools\Tool... |           | 9.3.4053    |

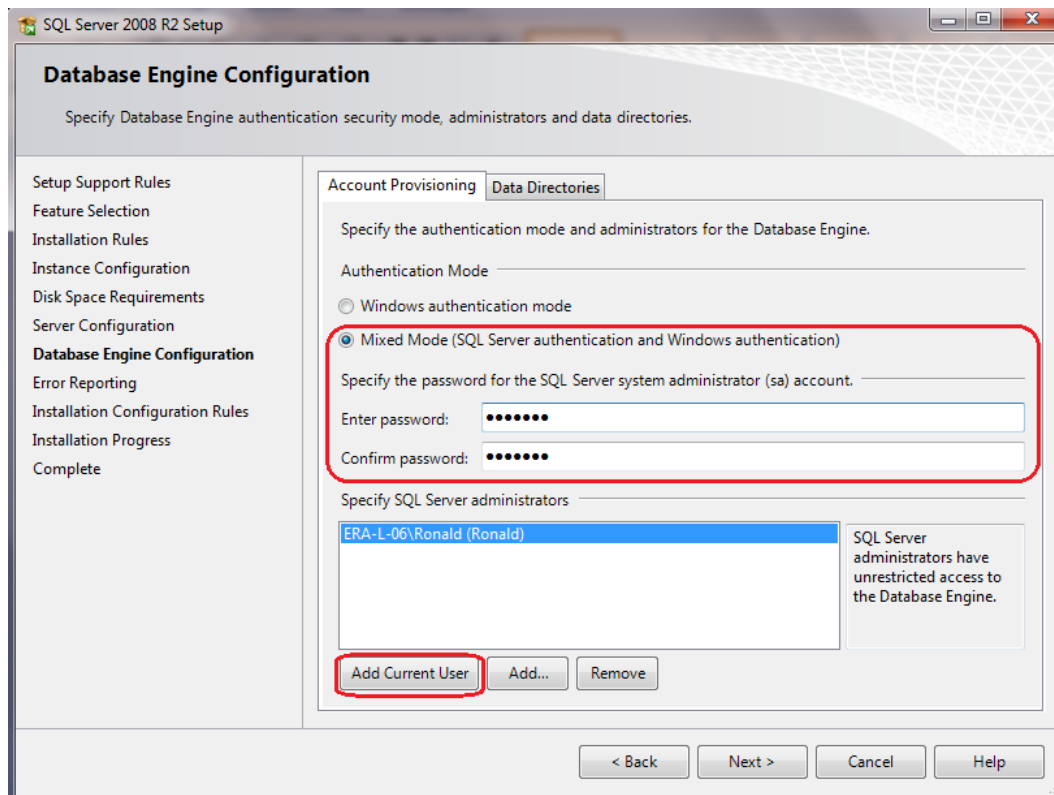
< Back   Next >   Cancel   Help

10. If there is enough disk space the Disk Space Requirement screen would be skipped otherwise fix space requirement and continue with installation.

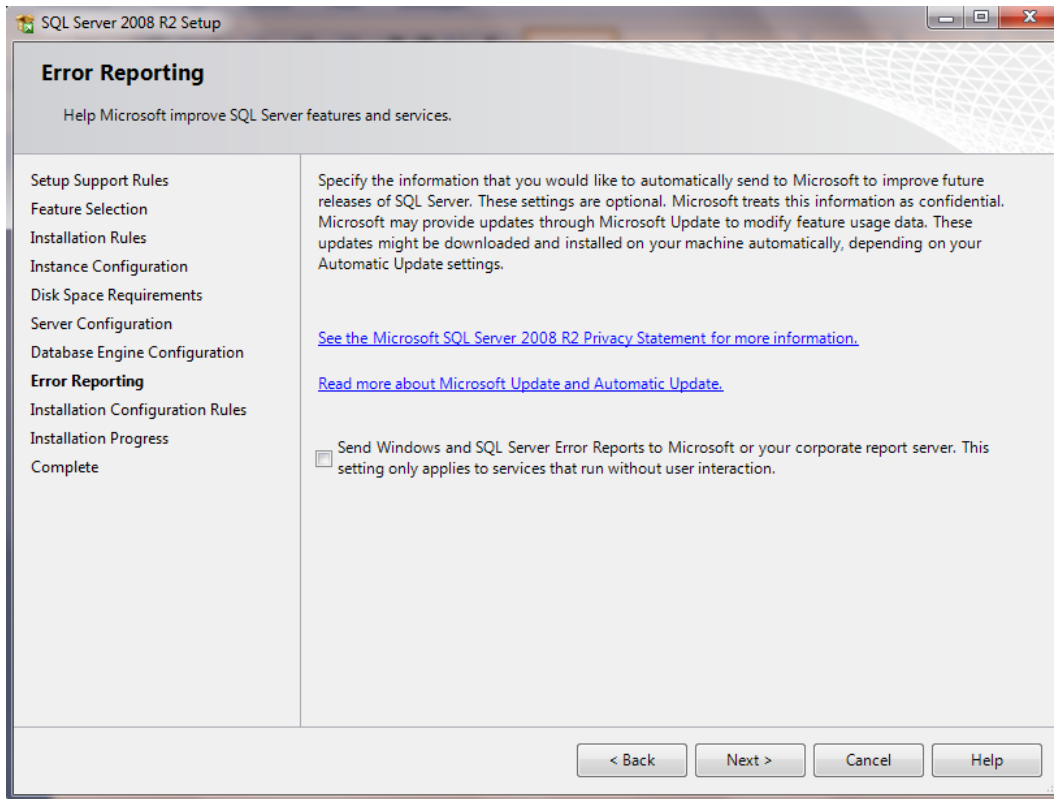
11. In Server Configuration screen shown below Click Next to continue with the installation.



12. On Database Engine Configuration “Account Provisioning” tab under authentication mode select **Mixed Mode (SQL Server Authentication and Windows Authentication)**. Enter a password for the SQL Server administrator (sa) account. **Note this password as you would need it later to log into SQL Server and to setup Shop Attendant-Lite.** Click Add Current User to include the current windows user account as an administrator. Click Next to continue with the installation.

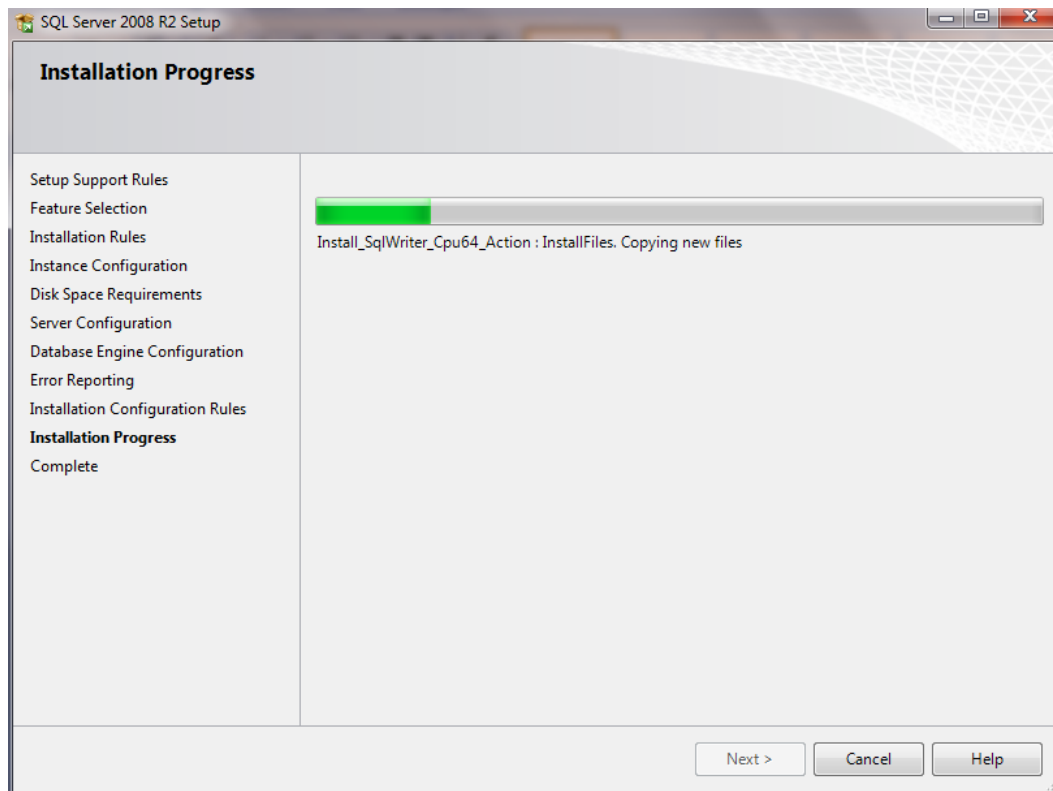


13. The Error Reporting screen appears; click Next to continue with installation

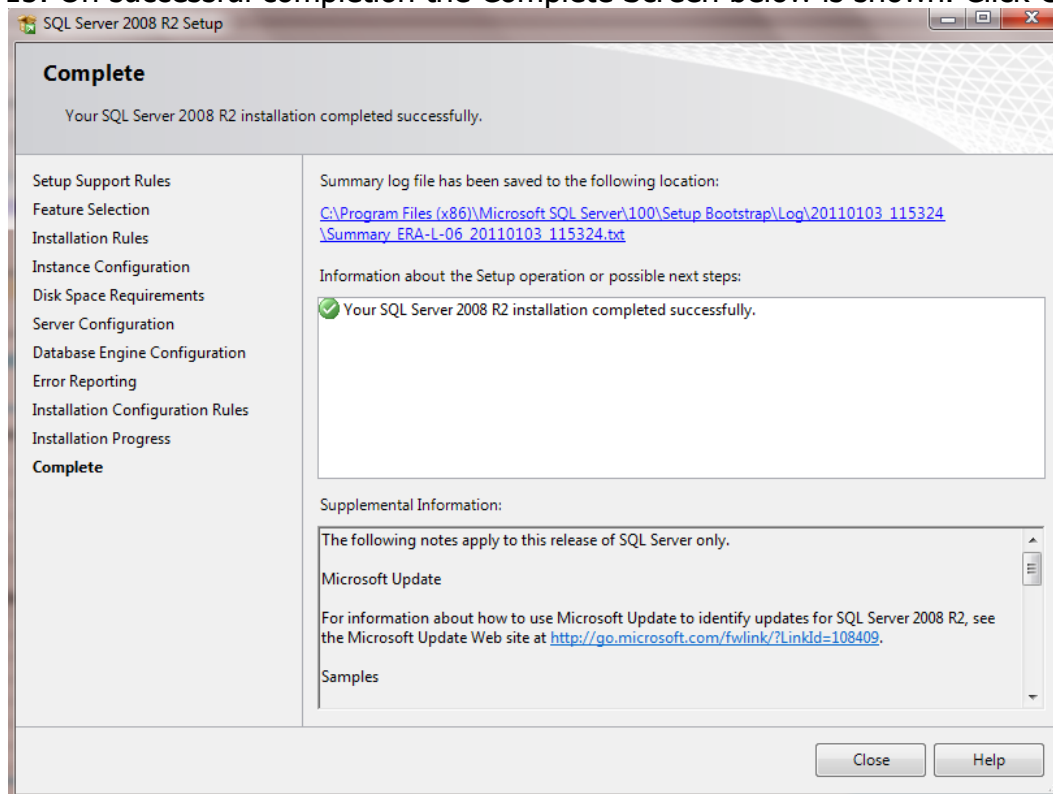


14. If there are no issues the Installation Progress screen comes up and installation commences.





15. On successful completion the Complete Screen below is shown. Click Close.



### 2.1.1 Enable TCP/IP

Now that SQL 2008 Express R2 is installed, we need to configure the Network options that are disabled by default.

1. Click Start, All Programs > Microsoft SQL Server 2008 R2> Configuration Tools > SQL Server Configuration Manager
2. Expand "SQL Server Network Configuration" and select Protocols for SQLEXPRESS.
3. Enable TCP/IP by right clicking on it and selecting Enable.
4. Enable Named Pipes right clicking on it and selecting Enable.
5. Close the SQL Server Configuration Manager.

### 2.1.2 Configure SQL Server Browser to start automatically

Once SQL 2008 Express is installed, we need to enable and set SQL Server Browser to start automatically as it is disabled by default.

1. Click Start, All Programs > Microsoft SQL Server 2008 R2> Configuration Tools > SQL Server Configuration Manager
2. Select SQL Server services.
3. Double click on SQL Server Browser in the right pane.
4. On the Service tab under Start Mode select Automatic.
5. Click Apply and Ok.
6. Close the SQL Server Configuration Manager.

### 2.1.3 Add Firewall Exceptions

If you have a software firewall installed on your server, you will need to add exceptions for the SQL Server and SQL Browser services. If you are using Windows Firewall, do the following:

1. In your Control Panel, open the Windows Firewall applet.
2. Go to the Exceptions tab.
3. Click Add Program
4. Browse to and select "C:\Program Files\Microsoft SQL Server\MSSQL.10\MSSQL\Binn\sqlservr.exe"
5. Click OK.
6. Click Add Program
7. Browse to and select "C:\Program Files\Microsoft SQL Server\90\Shared\sqlbrowser.exe"

8. Click OK and then click OK again.

If you are using a third-party software firewall, you will need to follow their instructions to add exceptions to sqlservr.exe and sqlbrowser.exe.

## 2.2 Creating the Shop Attendant database

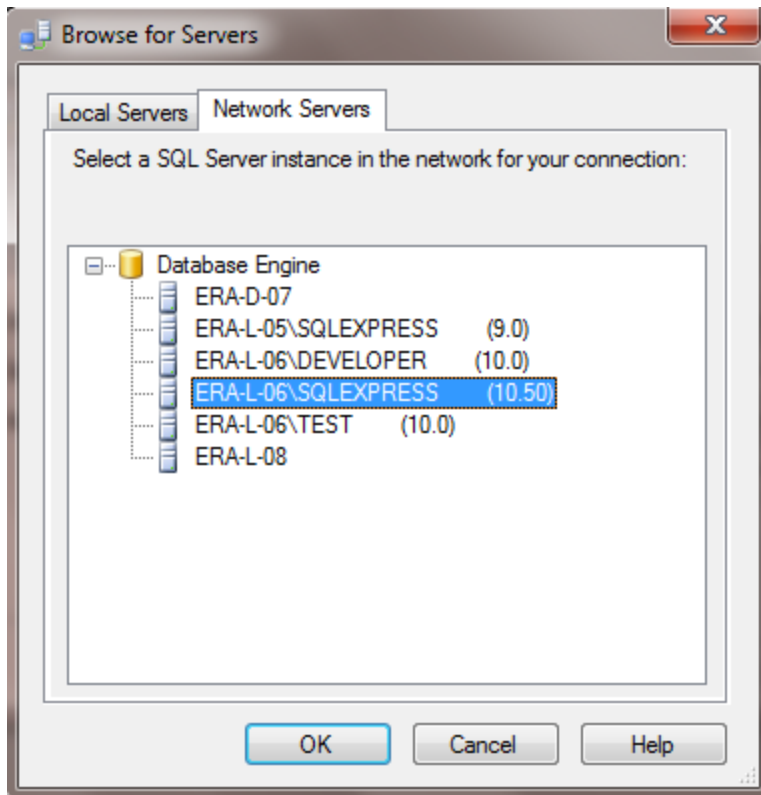
With the database server (SQL Server) successfully installed and configured the next step is to create the ShopAttendant-Data which is the database used by the application.

1. Unzip the downloaded ShopAttendant-Lite setup files into a folder on your system.
2. Launch SQL Server Management Studio from the Microsoft SQL Server 2008 R2 program group in windows.
3. The connect to server dialogue box shown below appears.



4. From the pull down list for server name select <Browse for more..>. The browse for server dialogue box appears. Select the Network Servers tab, expand the Database Engine tree and select the server you installed earlier.

Note server name is made up of the machine name and SQL Instance name. The SQL Instance name from section 2.1 step 9 is SQLEXPRESS therefore the server name would be in the format <machine name..>\SQLEXPRESS

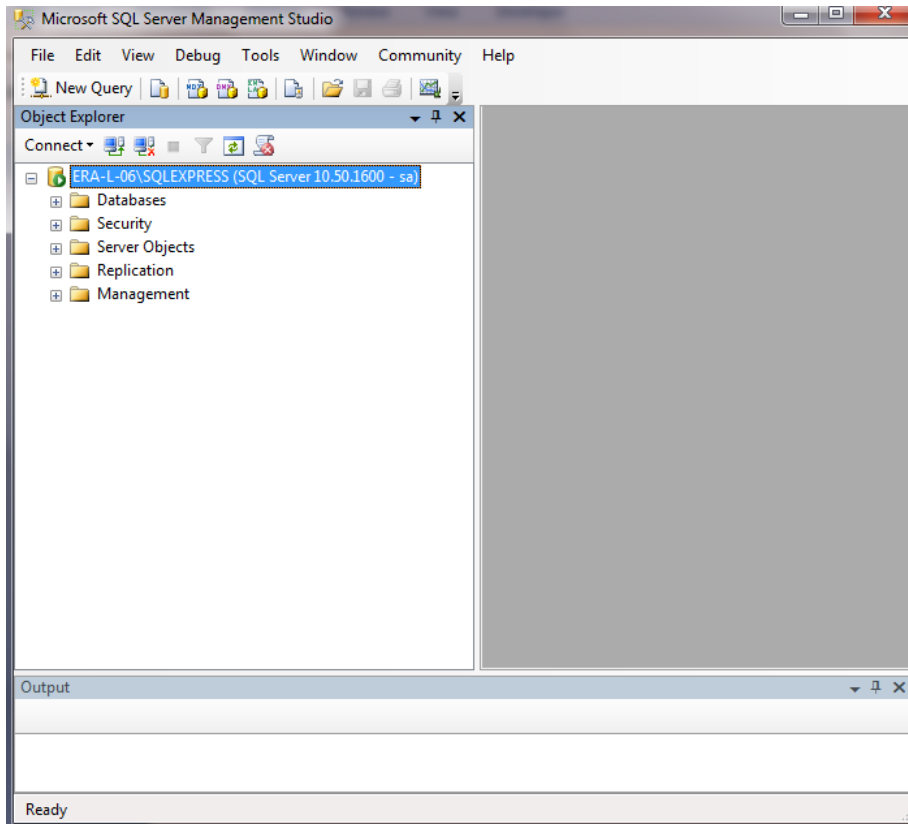


Click OK to return to the Connect to Server dialogue box.

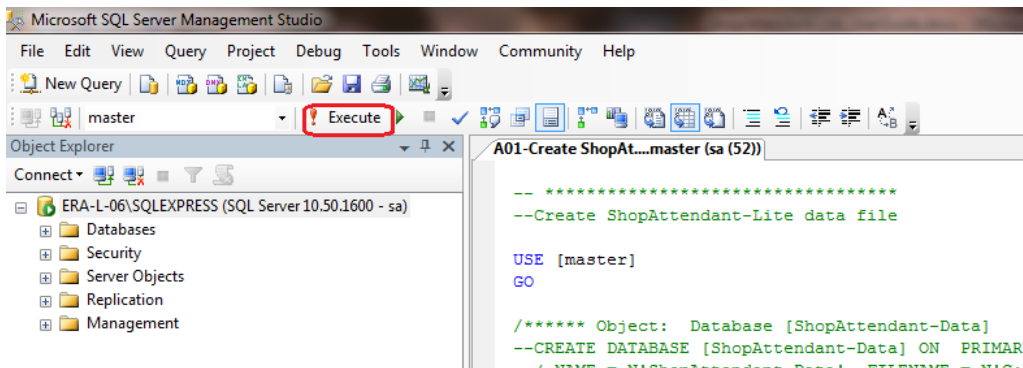
5. Under authentication select SQL Server Authentication.
6. Enter the SQL server Login **sa** and Password you specified in step 12 of section 2.1 while installing SQL Server.



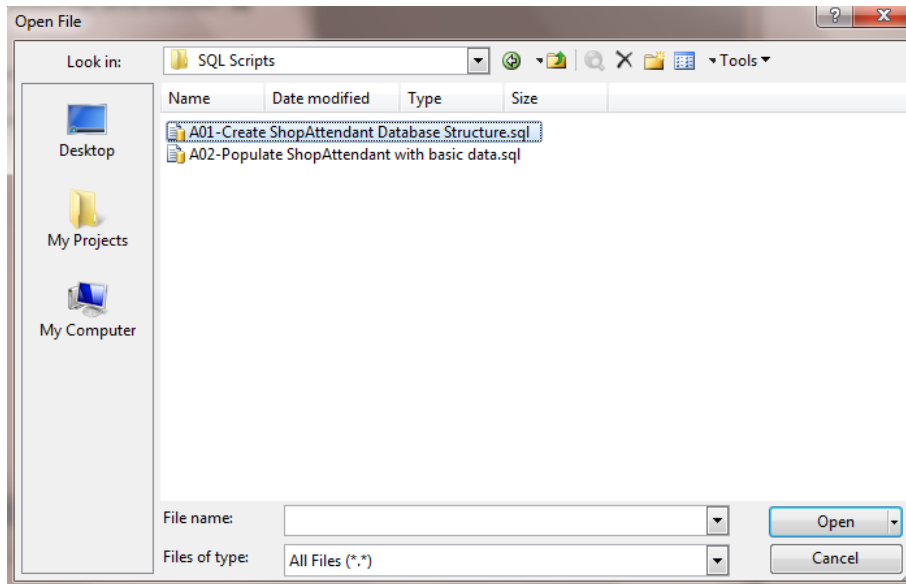
7. Click Connect. This would log you into the SQL server



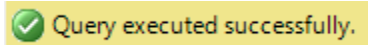
8. From within Microsoft SQL Server Management Studio, click open navigate to the folder where ShopAttendant-Lite setup files were unzipped into in step 1. Double click on the file **A01-Create ShopAttendant Database Structure.sql** to load it.



9. Click the Execute button on the ribbon



10. The message `Command(s) completed successfully.` should be displayed in the lower right pane indicating that the data base has been created.
11. Next stage is to populate the new database with basic data. To do so open the file **A02-Populate ShopAttendant with basic data.sql** and execute. The message below indicates successful execution

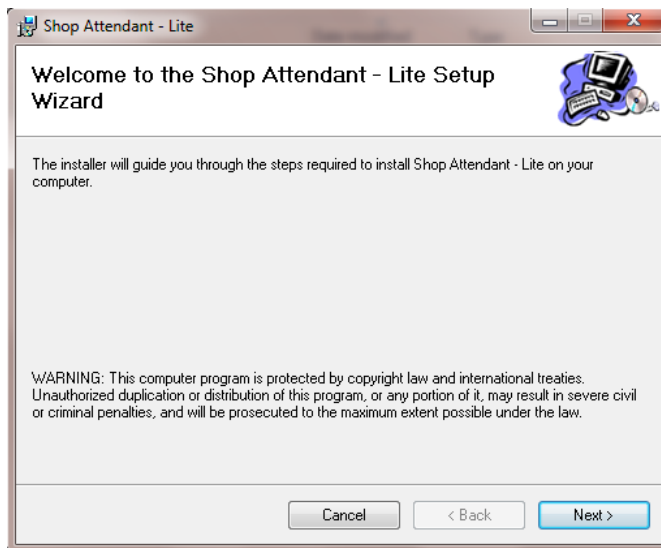


12. Exit Microsoft SQL Server Management Studio

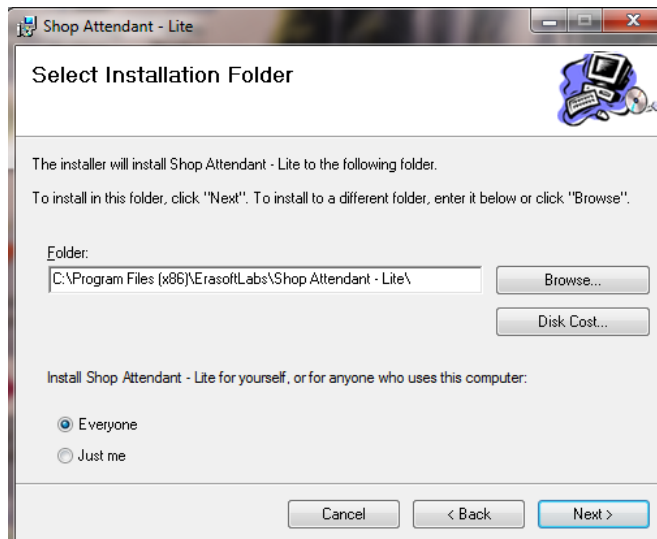
### 2.3 Installing the Shop Attendant-Lite application

With the database server installed and the database file created and loaded with basic data, the next stage is to install the Shop Attendant-Lite application on all the designated computers in the store using the steps below.

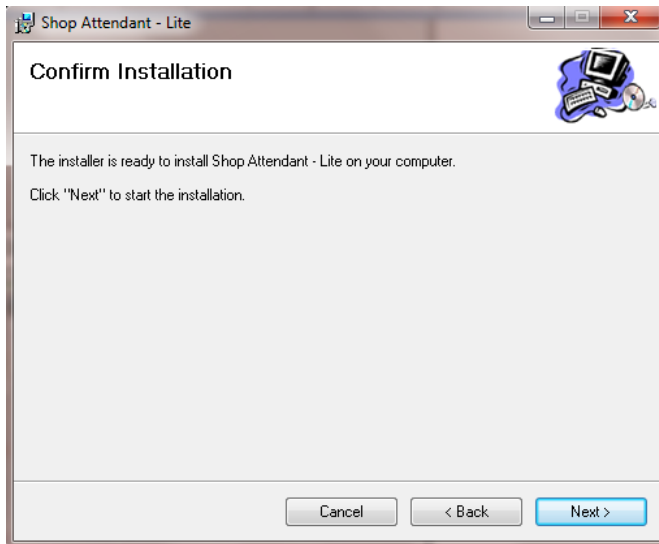
1. Navigate windows explorer to the folder where Shop Attendant-Lite setup files were unzipped into. Click setup.exe
2. Click next on the setup wizard screen below to continue with the installation.



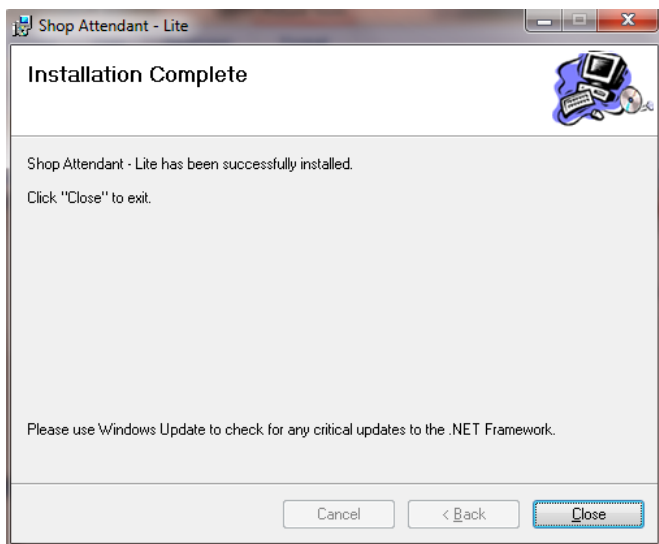
2. On the Select Installation Folder screen, ensure that everyone is ticked and then Click next to continue with installation.



3. On the Confirm Installation screen click Next



4. If a User Account Control message pops up click Yes to proceed
5. The Installation Complete Screen Below confirms a successful installation. Click close.



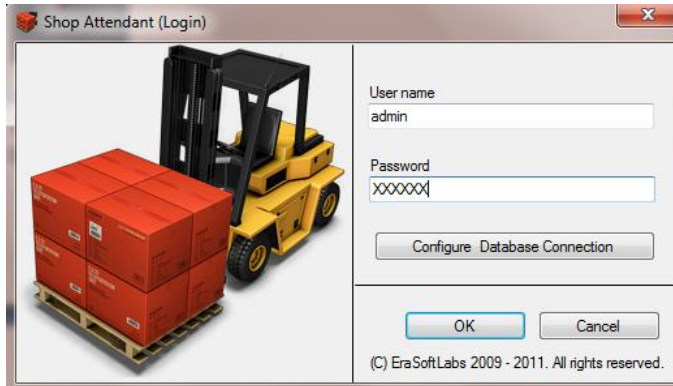
6. The start up icon below is placed on your desktop as well as a start up link under All programs



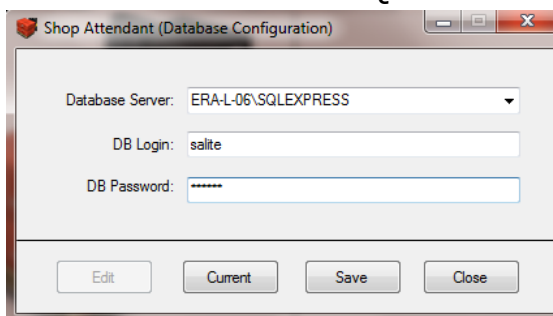
### 2.3.1 Connecting the Shop Attendant-Lite application to the database

1. Double click on the Shop Attendant-Lite application icon on your desktop. This brings up the Shop Attendant (login) screen.





2. Enter the following default login parameters
  - User name: **admin**
  - Password: **abc123**
3. Click Configure Database Connection button. The Shop Attendant (Database Configuration) screen appears.
4. Click Edit and select the SQL Database Server instance installed in section 2.1



- Under Database Server, Select the SQL Database Server instance installed in section 2.1
  - Enter the following default database login parameters for the Shop Attendant database
    - DB Login: **salite**
    - DB Password: **abc123**
  - Click Save to return back to the Shop Attendant (login) screen
5. Click OK to launch the application.

### 2.3.2 Setting up business parameters.

Before you can start using Shop Attendant-Lite effectively you need to set up basic business parameters such as business Name, business address, contact person, phone numbers, emails, payment terms, payment tolerance etc. To do this follow the steps below.

1. From within Shop Attendant-Lite navigate to the menu **System >> Configuration**. This brings up the Shop Attendant (Configuration) screen with the SQL Database tab opened and already populated with values entered in step 4 of section 2.3.1.

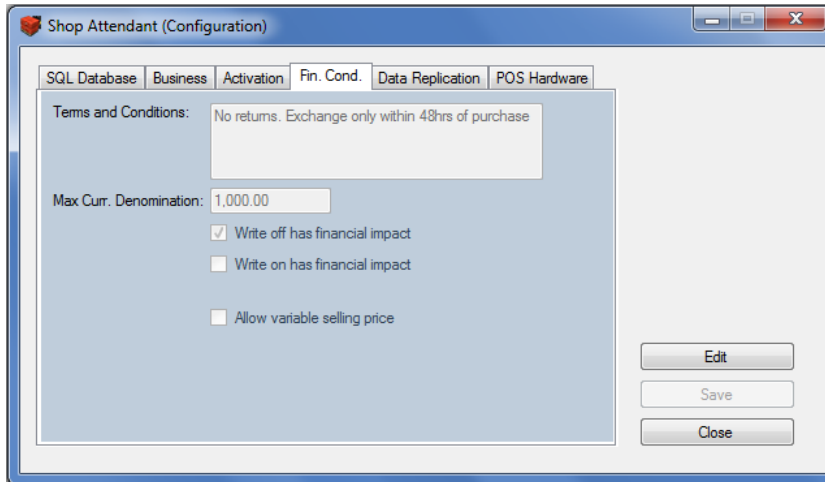
The screenshot shows the 'Shop Attendant (Configuration)' window with the 'SQL Database' tab selected. The window has a title bar with standard Windows controls. Below the title bar is a tabbed interface with tabs for 'SQL Database', 'Business', 'Activation', 'Fin. Cond.', 'Data Replication', and 'POS Hardware'. The 'SQL Database' tab is active, displaying a form with the following fields: 'Database Server:' with a dropdown menu showing 'ERA-L-06\SQLEXPRESS', 'DB Login:' with a text box containing 'salite', and 'DB Password:' with a text box containing 'XXXXXX'. To the right of these fields are three buttons: 'Edit', 'Save', and 'Close'.

2. Click on the Business tab and click Edit and enter the following information:
  - Business Name
  - Business Address
  - Contact Person
  - Office Phone
  - Mobile Phone
  - Email

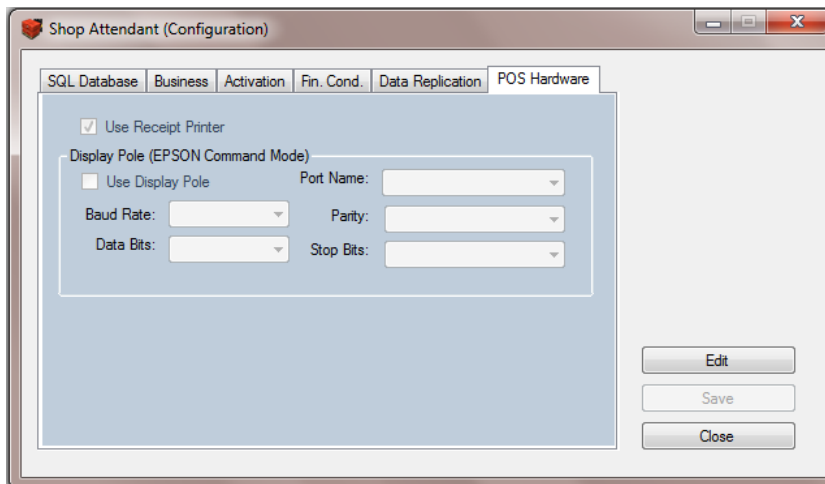
The screenshot shows the 'Shop Attendant (Configuration)' window with the 'Business' tab selected. The window has the same title bar and tabbed interface as the previous screenshot. The 'Business' tab is active, displaying a form with the following fields: 'Business Name:' with a text box containing 'ABC Retailers', 'Business Address:' with a text box containing 'No 23 Retail Center', 'Port Harcourt', 'Rivers State', 'Nigeria', 'Contact Person:' with a text box containing 'Siddon look', 'Office Phone:' with a text box containing '+234 84 12345', 'Mobile Phone:' with a text box containing '+234 802 12345678', and 'Email:' with a text box containing 'siddon.look@abcretailers.com'. To the right of these fields are three buttons: 'Edit', 'Save', and 'Close'.

3. Click on the Fin. Cond. tab and enter the following:
  - Terms and Conditions (this prints on the sale receipt)
  - Max Curr. Denomination (safeguards against input error by ensuring that the difference between amount to pay and value typed in as amount tendered during sales does not exceed this. Usually the highest currency denomination in circulation is entered)

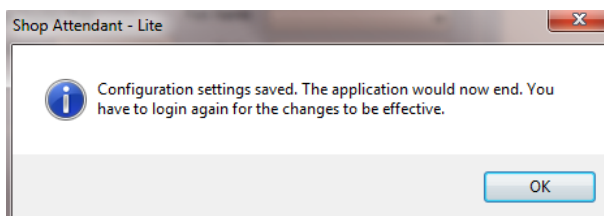
- Allow variable selling price. Tick this if you do not have a fixed selling price for your goods. This allows unit price to be amended during sales



4. If POS hardware such as receipt printer and/or customer display pole would be used click on the POS Hardware tab.



5. Click Save. The following message appears and once you click ok Shop Attendant-Lite closes.



Note that the configurations in steps 2 & 3 of this section are global and apply to all installations of Shop Attendant-Lite in the business.

However configuration step 4 is local and must be carried out on all computers on which Shop Attendant-Lite has been installed.